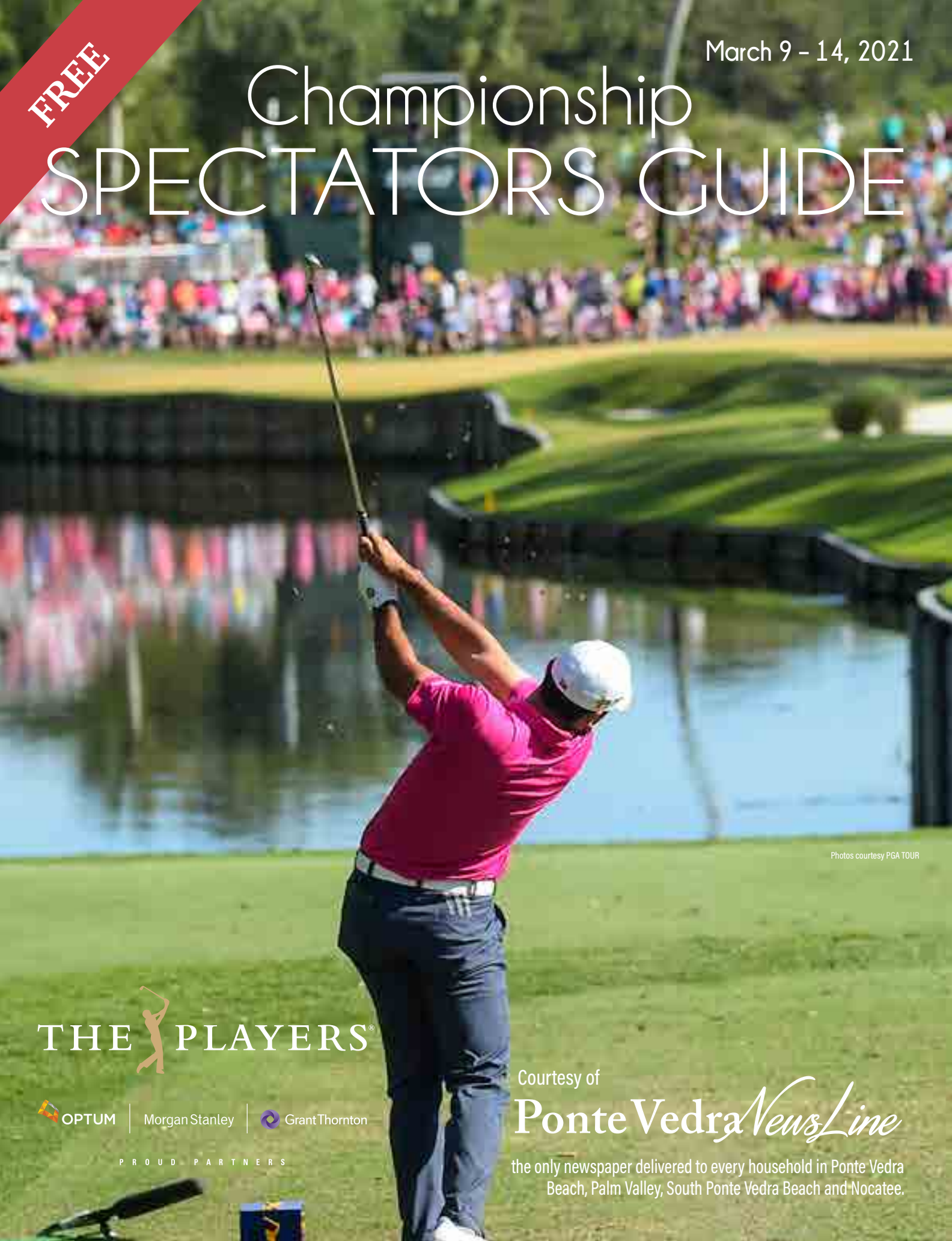


FREE

March 9 - 14, 2021

Championship SPECTATORS GUIDE



Photos courtesy PGA TOUR

THE  PLAYERS®



Morgan Stanley



Grant Thornton

PROUD PARTNERS

Courtesy of

Ponte Vedra *NewsLine*

the only newspaper delivered to every household in Ponte Vedra Beach, Palm Valley, South Ponte Vedra Beach and Nocatee.

step out of your yard

and into The Yards.

254 ALTA MAR DR
PONTE VEDRA BEACH
inside the gates of Sawgrass Players Club

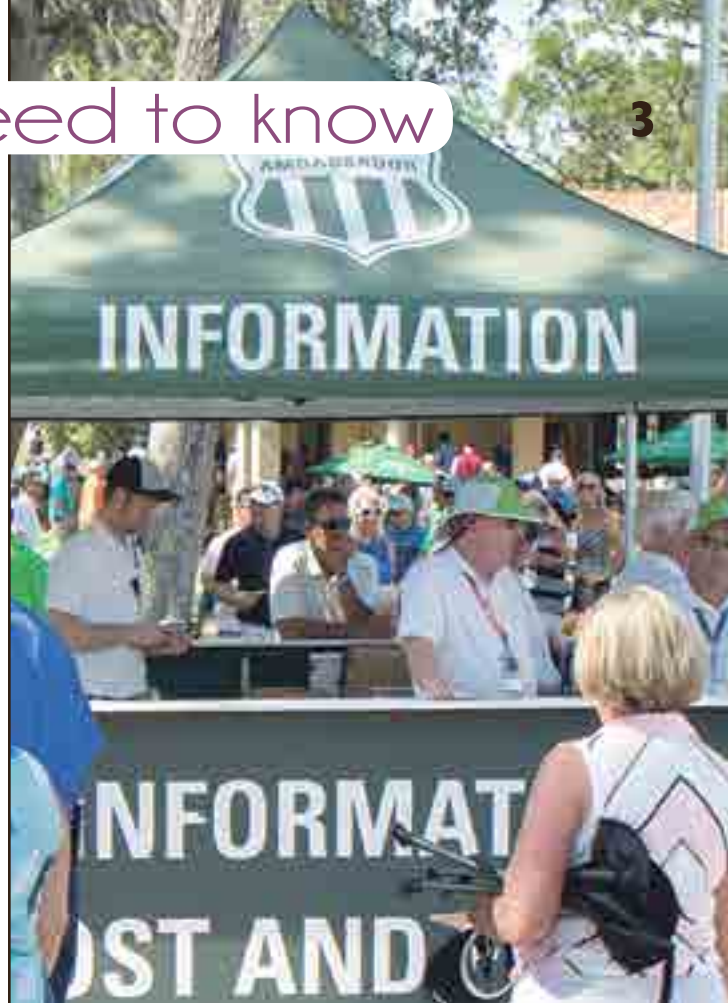


Tee times available Wednesday through Sunday PLAYERS week!

904.395.2101 | PLAYTHEYARDS.COM

Tickets: What you need to know

- Onsite fans will be limited to 20 percent of maximum expected capacity.
- Tickets will be sold only online at THEPLAYERS.com/tickets. This year, no tickets will be sold at Publix, Daily's, StubHub, etc.
- All tickets are digital.
- A limited rolling presale of tickets for key supporters, past attendees and newsletter subscribers began Feb. 1.
- A limited number of Stadium Passes for the general public became available for purchase on Feb. 16.
- Depending on overall ticket availability, tickets may be purchased for each day of the tournament — Tuesday, March 9, through Sunday, March 14 — however, you can only purchase two tickets per day.
- Prices are: Tuesday and Wednesday, \$25 each; Thursday and Sunday, \$70 each; and Friday and Saturday, \$80 each.
- Up to two youth, aged 15 and younger, will get in free with a ticketed adult on Tuesday and Wednesday only.
- Parking is not included in ticket prices and must be purchased separately by visiting www.theplayers.com/plan-your-visit/info-pages/transportation-parking.html



LATERRA LINKS CONDOMINIUMS WORLD GOLF VILLAGE, ST. AUGUSTINE, FLORIDA

***“Lock it, Leave it, Love it!”
Superior Quality Construction***

Right size to 2,681 sf of living space
all on one level with your own private elevator.

.....
Professionally Managed Condominium Association with Healthy Reserves.
.....

Purchase includes the Golf Membership Initiation Fee to both
the King & Bear and Slammer & Squire Championship Golf Courses.



Please call to schedule a Private Tour.
904-940-5388

153 Laterra Links Circle, #202
LATERRALINKS.COM
CBC1261181



4 contents & welcome

- 3 Tickets: What you need to know
- 5 Schedule of events
- 6 17th Hole
- 8 Parking: What you need to know
- 11 Feeding Northeast Florida
- 12 Health and Safety
- 14 Volunteering is a family affair
- 15 Meet Tournament Chairman Troy Smith
- 15 Where to eat and drink
- 17 Darlene's Diner
- 17 Permanent restroom facilities
- 18 Fun facts
- 19 Notable anniversaries
- 21 THE PLAYERS Lobby
- 22 Military Appreciation update



Photo courtesy PGA TOUR



Welcome to THE PLAYERS Championship, with tournament dates of March 9 – 14. This year's tournament will be unique in that a limited capacity of spectators will be allowed due to protocol restrictions required by the coronavirus pandemic.

Our Ponte Vedra NewsLine Championship Spectators Guide returns for the sixth year with an emphasis on the human interest stories that are such a part of the tournament. Learn about how excess food from last year's partially cancelled tournament was donated to help food insecure people in our community on page 11. Keeping it in the family, meet a long-time father and daughter volunteer team on page 14. This year's Tournament Chairman gives his thoughts on page 15.



For fun, test your trivia knowledge about the famous 17th hole on page 6. Learn how to make the tournament's signature beverage, the Sawgrass Splash, also on page 6. The guide also contains useful and timely tidbits — including safety protocols in place to keep everyone safe at the tournament.

Our company has produced local community newspapers in the North Florida area for the past 21 years. We thank you, our readers, for making Ponte Vedra NewsLine your community newspaper. We are pleased to present our 2021 Championship Spectators Guide and in a small way be a part of this iconic golf tournament.

FLORIDA *NewsLine*

Mark Pettus, Publisher
Martie Thompson, Editor
Julie Gerona, Creative Director
Linda Gay, Advertising Sales
Rebecca Thomson, Advertising Sales
Emily Whitehead, Office Manager

Florida NewsLine

102 State Road 13, Suite 1,
St. Johns, Florida 32259
(904) 886-4919
www.FloridaNewsLine.com

Publisher

Mark Pettus
Publisher@FloridaNewsLine.com

Editor

Martie Thompson
Editor@FloridaNewsLine.com

Creative Director

Julie Gerona
Graphics@FloridaNewsLine.com

Bookkeeper

Emily Whitehead
Accounting@FloridaNewsLine.com

Advertising Sales

Linda Gay
Linda@FloridaNewsLine.com
(904) 607-5062 cell
Rebecca Thomson
Rebecca@FloridaNewsLine.com
(724) 968-7602 cell

Social Media

SocialMedia@FloridaNewsLine.com

General Information

PGA TOUR

Images

PGA TOUR
Lynn Damm

Cover Photo

PGA TOUR

Graphics

Metro Creative

The Championship Spectators Guide is a special free publication by Ponte Vedra NewsLine, which is a part of Florida NewsLine. It is available at high traffic locations throughout the First Coast and mailed inside Ponte Vedra NewsLine to every residential address in Zip Codes 32081 and 32082. Advertising Rates are available by request. The writers' opinions do not necessarily reflect the opinion of Florida NewsLine. Florida NewsLine is not responsible for advertisement content or accuracy of information provided by its advertisers. Nor does Florida NewsLine endorse any of the products or services included in this publication. Florida NewsLine reserves the right to refuse advertisement or copy from any advertiser. All rights are reserved and no portion of this publication may be copied without the express written consent of the publisher. ©2021, Florida NewsLine.



KNOW THE SYMPTOMS OF COVID-19*

- FEVER OR CHILLS
- COUGH
- SHORTNESS OF BREATH OR DIFFICULTY BREATHING
- FATIGUE
- MUSCLE OR BODY ACHES
- HEADACHE
- NEW LOSS OF TASTE OR SMELL
- SORE THROAT
- CONGESTION OR RUNNY NOSE
- NAUSEA OR VOMITING
- DIARRHEA

IF YOU HAVE ANY OF THESE SYMPTOMS, YOU WILL NOT BE PERMITTED ENTRY INTO THE TOURNAMENT.

*AS ADVISED BY THE U.S. DEPARTMENT OF HEALTH AND HUMAN SERVICES

**Tuesday, March 9:
Military Appreciation Day
Charity of the Day:
Fire Watch**

- Entries open at 7:30 a.m.
- Practice day for professionals

**Wednesday, March 10
Charity of the Day:
Nemours Children's Health System**

- Entries open at 7:30 a.m.
- Practice day for professionals

**Thursday, March 11
Charity of the Day:
Ascension St. Vincent's Foundation**

- Entries open at 6:40 a.m.
- First round of competition begins at approximately 6:40 a.m. (threesomes off of No. 1 and No. 10)

**Friday, March 12
Charity of the Day:
Book Trust**

- Entries open at 6:40 a.m.
- Second round of competition begins at approximately 6:40 a.m. (threesomes off of No. 1 and No. 10)

**Saturday, March 13
Charity of the Day:
Ronald McDonald House Charities
of Jacksonville**

- Entries open at 7:30 a.m.
- Third round of competition begins at approximately 7:50 a.m., depending on the size of the cut (twosomes off No. 1)

**Championship Sunday, March 14
Charity of the Day:
Feeding Northeast Florida**

- Entries open at 7:30 a.m.
- Final round of competition begins at approximately 7:50 a.m., depending on size of the cut (twosomes off No. 1)
- Closing ceremony on Clubhouse Lawn immediately following play



DISCOVER THE DIFFERENCE

The PGA TOUR has assembled one of the finest, award-winning golf instruction teams in the game at the famed TPC Sawgrass facility located in Ponte Vedra Beach, Florida. Led by top-ranked golf instructor, Todd Anderson, expert instructors will begin with a complete assessment and develop a plan to quickly improve all facets of your game.

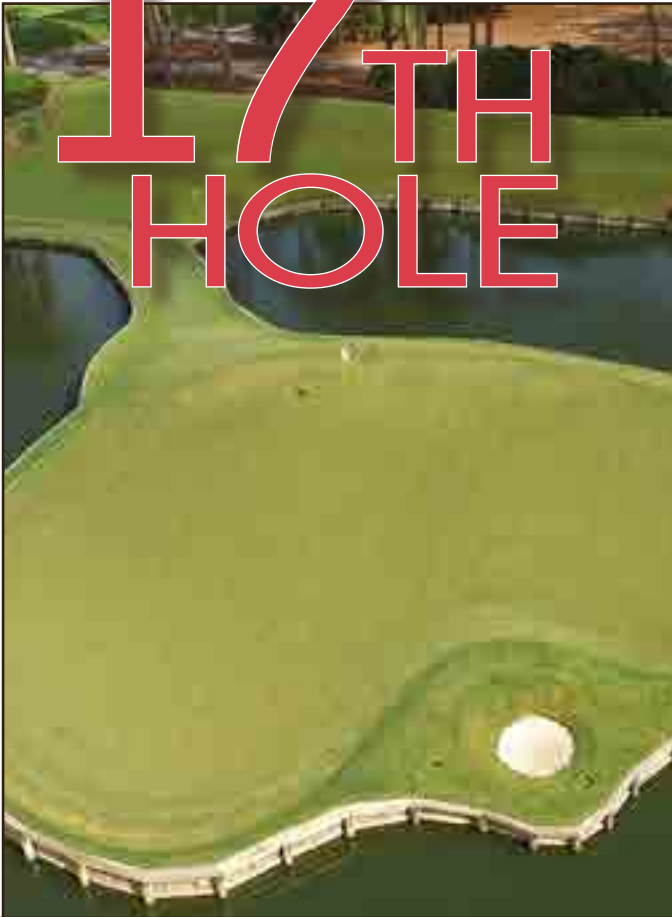


PERFORMANCE CENTER
TPC SAWGRASS

LEARN MORE

TOURPERFORMANCECENTER.COM
(904) 280-2452

17TH HOLE



- The island green is 78 ft. in length
- The number of golf balls that are retrieved from the surrounding water every year totals between 50,000 and 60,000.
- The length of the hole from the tournament tees is 137 yards
- Percentage of scores that end up double bogey or worse—7%
- The number of double bogeys in THE PLAYERS 2019 was 29, the highest of any hole.
- The average depth of the water surrounding the green is 4 feet.
- The number of cameras that NBC and the Golf Channel have used on the hole is 10.
- The distance of the Tiger Woods "better than most" birdie putt was 60 feet in 2001.
- The number of hole-in-ones on 17th during THE PLAYERS Championship is nine (9).
- The number of balls that were hit in the water on the 17th in the 2019 PLAYERS was 54.
- The bunker at the front of the green measures 55 sq. ft., the second smallest of 92 bunkers
- Yardage from the "drop zone" to the middle of the green is 75 yards.
- Square footage of the green is 3,912, compared to a course average of 4,500.
- The highest score posted by a professional golfer was a 12 by Bob Tway in 2005.



Photos courtesy PGA TOUR



Sawgrass Splash

- 1 ¼ oz. Grey Goose L'Orange Vodka
- 3 oz. Fresh Lemonade
- 2 oz. Fresh Orange Juice
- 1 oz. Fresh Lime Juice
- ½ oz. Simple Syrup

Served tall over ice,
garnish with a slice
of lime



Photo courtesy PGA TOUR
Sawgrass Splash



WHERE BEING *Active AND Social* IS ALWAYS IN SEASON

St. Johns County, Florida | New Homes from the Low \$300s

- A 55+ ACTIVE ADULT COMMUNITY
- 18-HOLE BUNDLED GOLF COURSE DESIGNED BY BOBBY WEED
- TOPTRACER DRIVING RANGE
- RESORT-STYLE POOL WITH ON-SITE RESTAURANT

Visit: StillwaterGolfClub.com
 Call: 844.880.8468



*Features, amenities, floor plans, elevations, square footage, and designs vary and are subject to changes or substitution without notice. Square footage/acreage/dimensions shown is only an estimate and actual square footage/acreage/dimensions will differ. Garage sizes may vary from home to home and may not accommodate all vehicles. Existing and proposed amenities for the community are subject to changes, substitutions and/or deletions without notice. Visit Lennar.com or see a Lennar New Home Consultant for further details and disclaimers. This is not an offer in states where prior registration is required. Void where prohibited by law. Copyright © 2021 Lennar Corporation. Lennar, the Lennar logo, Everything's Included, and the Everything's Included logo are U.S. registered service marks or service marks of Lennar Corporation and/or its subsidiaries. C01257529_2/21

LENNAR

8 **Parking:** What you need to know

- Parking is not included in ticket prices and must be purchased separately by visiting www.theplayers.com/plan-your-visit/info-pages/transportation-parking.html
- Parking will cost \$15 per day on Tuesday and Wednesday and \$40 per day on Thursday, Friday, Saturday, and Sunday.
- Parking will be completely digital and contactless this year.
- Fan shuttles will not be used.

Additional options:

- Rideshare services may be utilized to get to THE PLAYERS.
- Complimentary bike parking is available during the tournament, from the time entries open until end of play. Spectators can ride their bikes to Gate B located inside the Sawgrass Gates off of PGA TOUR Boulevard. Bike racks are available free of charge.
- Golf cart parking is available Tuesday through Sunday at Gate B located inside the TPC Sawgrass Gates off of PGA TOUR Boulevard, in the back of lot 5. Golf cart parking is free of charge and is available from the time entries open until the end of play.



**WE
PREPARE
OUR
STUDENTS**

**FOR COLLEGE
AND LIFE**

**LIKE NO OTHER
SCHOOL.**



The Bolles School has a history of graduating very successful students.

Learn how your child will benefit.

Bolles.org

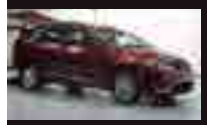
BOLLES

ALL THINGS POSSIBLE

Pre-K through Grade 12, Day & Boarding School

“Caring for our seniors is perhaps the greatest responsibility we have. Those who walked before us have given so much and made possible the life we all enjoy.”

Strictly Senior Services
serving seniors in Northeast FL, with wheelchair accessible transportation and housing placement services.



904.481.6786

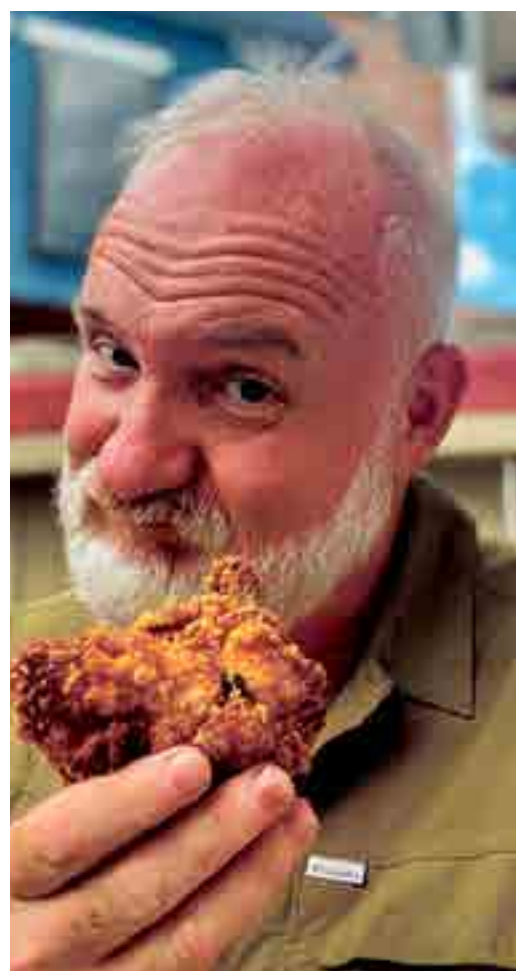
strictlyseniors.org

tracey@strictlyseniors.org



SAFETY GUIDELINES

- KEEP SOCIAL DISTANCING OF AT LEAST 6 FEET
- MASKS REQUIRED AT ALL TIMES (LIMITED EXCEPTIONS APPLY)
- WASH HANDS FOR 20 SECONDS OR MORE
- USE HAND SANITIZER THAT HAS A MINIMUM OF 60% ALCOHOL
- COVER ALL COUGHS AND SNEEZES
- STAY HOME IF YOU FEEL ILL



**EXCLUSIVE EVENT:
 CELEBRITY CHEF
 ART SMITH**

For one week only, Sawgrass Marriott hosts Chef Art Smith, Oprah’s personal chef for more than a decade, for a preview of his new Chicago restaurant, Reunion.

Reserve your tickets today for this exclusive pop-up taking place during the week of THE PLAYERS Championship, March 9-14, 2021.

Purchase tickets on Eventbrite.



MEMBER OF MARRIOTT BONVOY™

We Know the Beaches Best!



Suzie Connolly 904-234-8812
Rory Connolly 904-762-8735
sconnolly@pvclubrealty.com
rconnolly@pvclubrealty.com



Belk Ingram
904-254-5969
bingram@pvclubrealty.com



Suzanne Stephens
904-333-8843
smstephens@pvclubrealty.com



Patti Armstrong
904-502-6160
pattiaarmstrong@icloud.com



Susan Fort 904-514-7150
Tyler Ackland 904-510-6918
sfort@pvclubrealty.com
tackland@pvclubrealty.com



PONTE VEDRA CLUB REALTY
TOP PRODUCER CLUB
2018, 2018, 2019 Presidents Club
2019 - 2019 Diamond Club
2014 Platinum Club
2013, 2017 Gold Club



PONTE VEDRA CLUB REALTY
TOP PRODUCER CLUB
2018, 2018, 2019 Presidents Club
2019 - 2019 Diamond Club
2014 Platinum Club
2013, 2017 Gold Club



PONTE VEDRA CLUB REALTY
TOP PRODUCER CLUB
2014 - 2019 Diamond Club



Proudly affiliated with the clubs of Gate Hospitality



Ponte Vedra Inn & Club The Lodge & Club

Ask about Preferred Membership Initiation Fee pricing for the
Ponte Vedra Inn & Club, The Lodge & Club,
Epping Forest Yacht & Country Club and The River Club;
certain restrictions may apply.



EPPING-FOREST YACHT & COUNTRY CLUB THE RIVER CLUB



237 N. Roscoe Blvd.
Ponte Vedra Beach
100' on the Intracoastal
5/5/1 • 5,912 SF
\$2,499,900
Susan Fort & Tyler Ackland



5110 Bridlewood Ct.
Ponte Vedra Beach
Marsh Landing CC
4/3/1 • 3,432 SF
\$775,000
Suzanne Stephens



525 Sea Lake Ln.
Ponte Vedra Beach
Ponte Vedra by the Sea
5/4 • 4,038 SF
\$985,000
Suzie Connolly



129 Azalea Point Dr. N.
Ponte Vedra Beach
Azalea Point
5/3 • 2,980 SF
\$578,000
Suzie Connolly



5307 Hidden Hollow Ct
Jacksonville
Pablo Creek Reserve
4/4/2 • 6,247 SF
\$2,869,000
Susan Fort & Tyler Ackland



26 La Vista Dr.
Ponte Vedra Beach
.59 acre corner lot
4/4 • 4,636 SF
\$2,500,000
Patti Armstrong



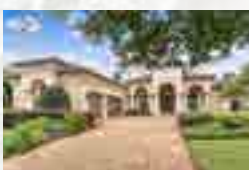
189 Canal Blvd.
Ponte Vedra Beach
Palm Valley Gardens
125' x 232' • .71 acre
\$750,000
Suzie Connolly



20 S. Roscoe Blvd.
Ponte Vedra Beach
5 Acre Lot
4/4/2 • 7,200 SF
\$3,950,000
Suzie Connolly



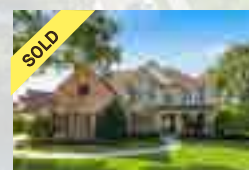
13606 Queens Harbour Blvd
Jacksonville
Queens Harbour
4/4/1 • 3,272 SF
\$1,095,000
Belk Ingram



201 Mariela Ct.
Ponte Vedra Beach
Montura
4/4 • 3,722 SF
\$949,000
Patti Armstrong



14402 Marina San Pablo
Unit #805
Jacksonville
2/2/1 • 1,727 SF
\$599,000
Susan Fort & Tyler Ackland



401 S. Lakewood Run
Ponte Vedra Beach
Sawmill Lakes
6/4/1 • 3,520 SF
\$712,000
Suzanne Stephens



Ponte Vedra Club Realty

(904) 285-6927 | pvclubrealty.com

280 Ponte Vedra Boulevard, Ponte Vedra Beach, FL 32082

The abrupt cancellation of THE PLAYERS in March 2020 due to the coronavirus left many tournament plans up in the air. What should be done with goods and supplies already at the tournament, which was still planned to have its busiest days?

Fortunately, PGA TOUR Commissioner Jay Monahan and PGA TOUR winner and Feeding Northeast Florida ambassador Billy Horschel had an idea.

During PGA TOUR Commissioner Monahan's press conference on Friday, March 13, following the cancellation of THE PLAYERS, Monahan vowed, "One of the things that we're quickly going to get to work on is how do you take all the food supplies that we have here and put them to good use for our community, and that's something that we're going to do immediately."

Just hours later, five-time PGA TOUR winner and Ponte Vedra Beach resident Billy Horschel and his family joined THE PLAYERS, the PGA TOUR, and TPC Sawgrass chefs to package and load donated food items from its caterers — Par Caterers and Proof of the Pudding — as well as the TPC Sawgrass clubhouse to serve and support the food security needs of citizens and families in the Northeast Florida community.

Horschel joined the team to help package and load this food, which in total amounted to 22 tons of food, valued at nearly \$700,000, that was given to Feeding Northeast Florida for distribution to its network of over 160 social service agencies and programs.

Since the tournament was cancelled, half of THE PLAYERS' \$15 million purse was distributed to the 144 players in the field — about \$52,000 per person. Horschel took his earnings and donated \$20,000 to Feed Northeast Florida and the remaining \$32,000 to other charities.

Horschel and his family have supported Feeding Northeast Florida since 2014, helping to raise more than \$250,000 for the organization.

By Martie Thompson



Billy Horschel and family help load donated food in the truck.



Photos courtesy PGA TOUR
Many hands made light work as food was delivered to Feeding Northeast Florida.

Quick thinking last year
benefits **Feeding
Northeast Florida**

12 Health and Safety

The health and safety of all associated with the PGA TOUR continues to be the priority.

This includes the three Ws:

Wear a Mask, Watch Your Distance, and Wash Your Hands.

Prior to Arrival

Those who feel ill or are experiencing symptoms of COVID-19 will not be admitted to PGA TOUR tournaments. Check your temperature before arrival to confirm you do not have a fever of 100.4 degrees Fahrenheit or more.

Social Distancing

It is important that everyone on-site practices social distancing in order to help maintain a safe environment. While on-site, pay attention to visual and verbal cues for capacity, directional flow and viewing area guidelines.



Masks/Face Coverings

Masks are required at PGA TOUR tournaments at all times, both indoors and outdoors, with limited exceptions.

Exceptions include:

- Medical conditions that make wearing a mask difficult
- Children under the age of 2
- While actively eating or drinking

• Guests should bring their own CDC-approved face covering or cloth mask from home. Per CDC guidelines, a face shield is not an appropriate substitute for a face covering. Masks will be provided by the tournament to those guests who do not bring their own. Masks should fit snugly around the sides of the face and cover your nose, mouth and chin. Masks must be affixed prior to arrival at the main entry gate.

Arrival

Upon arrival at the event, each guest will be subject to a thermal screening and health questionnaire. Once guests receive an admissible result, they will proceed through standard security checks and bag search in a safe and socially distant manner.

Ticketing Admissions

Guests are required to present a valid ticket to enter tournament grounds via contactless admissions process. Guests will proceed through the gates once a valid scan has been registered. Practice social distancing when queuing for entry and wear your mask at all times.

Signage & Guidelines

Guests will notice increased safety signage throughout the golf course, as well as visual and verbal reminders of safe behavior guidelines and Code of Conduct that must be adhered to while on-site. Failure to comply with any posted or verbal guidelines may result in consequential action, including expulsion from the tournament grounds.

Onsite Transactions and Payments

In partnership with Mastercard®, the PGA TOUR has worked to enable contactless payments across key point of sale locations on-course so guests can purchase the things they love using a safer cashless method in a clean environment. At PGA TOUR tournaments, guests are encouraged to "tap-and-go" with their contactless card at checkout at applicable events and vendors.

Rope Line and Bleacher Policy

Consumption of food and beverage is prohibited within 10 feet of the rope line. Consumption of food and beverage is also prohibited in the first two rows of any bleacher. Masks must be worn at all times within 10





feet of the rope line and in the first two rows of any bleacher, even when in possession of food and beverage.

Sanitization

PGA TOUR tournaments will have enhanced sanitization protocols in place to ensure all areas are routinely cleaned and sanitized. Sanitization and handwashing are encouraged throughout your time on-site. Guests are permitted to bring their own sanitizer from home.

Autographs

Our PGA TOUR Players can't wait to see guests back on-site, but for the health and safety of everyone on property, no handshakes, fist bumps, or autographs are permitted at this time. Please respect their space and watch your distance.

Feeling Ill On-site

If you begin to feel ill on-site, please return safely home or seek medical attention at the First Aid Tent.

The Final Putt

Once the final putt drops, exit the tournament venue safely and patiently, while keeping socially distant from others.



YOUR TICKET TO
**FIRST CLASS
HAPPINESS™**

941.554.7230 GRANDLIVING.COM/TPC

GRAND LIVING.
YOUR LIFE. UNIQUELY EMBRACED.

INDEPENDENT | ASSISTED | MEMORY CARE

3270 Tamaya Blvd, Jacksonville, FL 32246

Volunteering is a family affair

By Martie Thompson

Northeast Florida natives Murray Beard and his daughter Laura Beard Renstrom look forward to tournament week every year. Both said that the camaraderie of the volunteers and friendships built over the years are favorites, but the charitable aspect of THE PLAYERS is a big part of what draws them in, year after year.

"I think THE PLAYERS is the best week of the year in Ponte Vedra Beach," Beard said. "The impact that the tournament and the PGA TOUR have on northeast Florida is incredible. And some of the best golf in the world is played right in our backyard."

Beard would know. An avid golfer himself, he said his first involvement with the tournament was as a teenager in the 1970s when he was a standard bearer at what was then known as the Greater Jacksonville Open, held at Hidden Hills Country Club. Fast forward to 1983 when a friend suggested that he volunteer at the tournament now played at TPC Sawgrass — and Beard's volunteer service continues unbroken to this day. Over the years, he chaired several of the committees and by 1996 was promoted to vice chairman of the tournament, overseeing multiple committee chairmen.

"For the 2000 tournament, I had the privilege of serving as Tournament Chairman," Beard said. "The Tournament Chairman is the volunteer face of the tournament and at the time I coordinated the activity of 1,500 volunteers."

Now a member of the distinguished group of past Tournament Chairmen known as the Red Coats, Beard said he is more involved with determining the allocation of the charity funds raised by the tournament each year. Beginning this year and continuing for a two year period, he will serve as Captain of the Red Coats and coordinate all of the activities of the 45 member group, which include charitable appearances and tournament promotion.

It's easy to see why his daughter became involved with the tournament.

"As long as I can remember, I was always at the tournament due to my dad," Renstrom said. Although not a golfer herself, she said she loves to watch the game. Renstrom said she began her volunteer service as a runner at Hole No. 9. This involved literally running with a player's scorecard to the scoring tent and then running it back to the caddy. A couple of years later, she attained the age of 13, which allowed her to be a standard bearer, something she did until she graduated from high school.

After she graduated from college and law school, Renstrom said she was looking for ways to meet other young professionals and give back to the community, so she reached out to THE PLAYERS. In 2015 she resumed volunteering as the assistant chairman of standard bearers. She has since chaired several committees and

for this year's tournament will serve as the chairman of the Tournament Support Committee.

"It's like the Swiss army knife of committees," Renstrom said. "Whatever is needed at the tournament, we will fill in."

The tournament is always looking for volunteers and Beard and Renstrom both said there are many ways to get involved.

"We try to match up your interests with a volunteer position," Renstrom said. "There are opportunities to work on the course, or with medical, or with youth."

Some of the volunteer opportunities like working at the facilities or with apparel start well before the tournament itself and others, like being a marshal or a walking scorer, take place during tournament week.

"We make sure to always have a good time while we are working," Beard said. "We have found over the years that if you volunteer for five years, you will be there for life." But it all comes back to the fact that THE PLAYERS, due to its utilization of a well-organized volunteer group, can donate tournament proceeds to local charities. "I love that millions of dollars go to local charities each year," Renstrom said. "Volunteering is a great way to have fun and give back."



Murray Beard at the tournament in 2018
Photos courtesy PGA TOUR



Laura Beard Renstrom at the tournament in 2017.

Meet Tournament Chairman Troy Smith

By Tiffany Merlo Phelps

In the past 11 years, Troy Smith has volunteered in leadership roles for six different committees at THE PLAYERS. This year he is the 2021 Tournament Chairman — which he describes as the honor of a lifetime to lead an amazing team of volunteers.

However, don't ask him to pick his favorite committee.

"That is a tough one that I cannot answer. They are all unique in their functions and diverse in the personalities of all the people you meet," said Smith, who is a partner at the law firm Burr & Forman. "It's been a rewarding experience."

Smith has served on the General Parking, Ecology, Commissary, VIP Parking, Benefactor and Volunteer Shuttle committees. For the past four years, Smith has served as the vice chairman, coordinating Volunteer Services, Facilities, Player Services and serving as the First Vice Chairman last year.



Troy Smith and family.
Photo courtesy Troy Smith

At the heart of it all, according to Smith, is being surrounded by "Golf's Greatest Volunteers" who play "a critical role in preparing for and delivering this championship."

Smith began volunteering in 2000 after friends who volunteered at THE PLAYERS encouraged him to do so.

"I started in General Parking and had a great time that year and every year since. Volunteering is so much fun, and you make loads of great lifelong friends; however, the main reason I volunteer is because of the charitable impact of the TOUR," said Smith, who lives in Ponte Vedra Beach with his six children and wife, Jenni.

Case in point: There are 300 charities in Northeast Florida that benefit from the event.

"Thanks to the generosity of my fellow volunteers, our Proud Partners Morgan Stanley, Grant Thornton and Optum, a devoted fan base and the entire northeast Florida community, THE PLAYERS has been able to generate more than \$100 million for local charities since the tournament began in 1974," said Smith.

His entire family believes in and participates in the event. "They are all in. Three of my older children would have been runners this year, but we had to scale that back for safety concerns. Jenni is with me at most every PLAYERS function.

Ultimately all of my children will have experience volunteering at THE PLAYERS," said Smith.

Finally, Smith's most special moment at THE PLAYERS is found in the beauty of the setting.

"My favorite time is sitting on the hill behind 18 tee and watching the sun come up. It is breathtaking."

Where to eat and drink

Taste of JAX: No. 11 green/ No. 12 tee

Cousins Maine Lobster serves up its 100% premium, wild-caught, sustainably harvested lobster from Maine.

MOJO BBQ is a premier barbecue, southern food, and craft cocktail destination with eight locations in North and Central Florida.

Wine & Dine on 9 presented by Meiomi Wines: No. 9 fairway

Enjoy food from **Bonefish Grill** and a glass of wine from Meiomi Wines, the official wine of the PGA TOUR, in a beautiful garden setting. Freshen up at the permanent restrooms here as well.

Food Court - THE PLAYERS Welcome Experience

Homespun Kitchen offers healthy fast food, including vegan, gluten free or paleo.

Firehouse Subs is a sandwich shop founded in Jacksonville.

Daily's convenience stores have served communities throughout the state of Florida since 1997.

Trucks on 10: No. 10 fairway/No. 11 fairway/No. 15 green

This venue offers flavors from local, favorite food trucks, including **Twisted Okie, Carolina Jax, Mama's** and **Tikiz** as well as an open-air Michelob ULTRA Mobile bar.

Tacos on 12: No. 12 green

One of the most well-trafficked food venues on the course, featuring food and drink from **TacoLu**, Jacksonville's most popular Baja Mexicana.

Sawgrass Square: No. 10 tee

Located at the Davis Love III Entry, grab a donut from **Mini Bar** and/or some BBQ from **4 Rivers Smokehouse**.

Bier Garden: Adjacent to the Couples Entry

This venue features a variety of craft beers on tap.

**ASK ABOUT CHARTER MEMBERSHIP – SAVE UP TO
\$8,000 AND GET FIRST PICK ON APARTMENTS.**



Enjoy A Whole Day Out – While Staying In.

It starts with breakfast with your golf buddies and a group workout at the Fitness Center. After a quick bite at the poolside cabana, it's on to the putting contest where the tricky shot earned you a beer at The Hatch Bar.

The night brings a blockbuster showing at The Legend Cinema, upscale fare at Latitudes Restaurant with meals prepared by our Executive Chef or an outing to the nearby Times-Union Center.

Tomorrow, take a swing at learning a new hobby or trade your golf gloves for gardening gloves. The choice is yours. With 200 scheduled activities per month and almost as many new friends, that's vibrant independent living.

Tee up your cell and call us.

**CALL US AT (904) 490-6300
AND SET UP A PRIVATE TOUR OF JACKSONVILLE'S
FINEST, NEWEST VIBRANT INDEPENDENT LIVING.**

**OPENING THIS
SUMMER
Reserve Now!**

Windsor Pointe
VIBRANT INDEPENDENT LIVING

A Residence of Legend Senior Living®
WindsorPointeJAX.com
  **NO BUY-IN**

Welcome Center:
14333-26 Beach Blvd
Jacksonville

TEN COMMUNITIES THROUGHOUT FLORIDA:

The Windsor at San Pablo | The Windsor at Ortega | The Windsor of Gainesville
The Windsor of Palm Coast | The Windsor of Ocala | The Windsor of Lakewood Ranch
Windsor Reflections | The Windsor of Bradenton | The Windsor of Venice | The Windsor of Cape Coral

Darlene's Diner offers the ultimate dining experience for tournament volunteers

By Tiffany Merlo Phelps

When Darlene Riggs volunteers at THE PLAYERS, she jokingly wonders if there is really a golf tournament taking place. That's because she has one goal throughout the seven-day event: feed every volunteer a good meal whenever they are hungry. She rarely takes a step outside of her namesake establishment, Darlene's Diner.

"I have a real appreciation for the volunteers, for what they do and for needing to get in and out with a good meal," said Riggs, a volunteer for 34 years.

Darlene's Diner, which normally seats 120 people, has become known as the ultimate dining experience for the many volunteers at THE PLAYERS. While some adjustments have been made this year because of COVID (fewer volunteers, more outside seating and to-go meals), Riggs said cooking quality hot meals remains the priority. The diner is open from 6 a.m. until 4:30 p.m.

Riggs said this begins with a hearty breakfast known as "The Ultimate," Darlene's special. It consists of two pieces of toast, two fried eggs, two pieces of bacon, two pieces of cheese and Italian sausage on top.

"They need to have a strong start to the day," said Riggs, who lives in North Jacksonville.

Riggs was first introduced to THE PLAYERS when she worked for SunTrust Bank, and she was asked to be on site for bank deposits. Across from her station was a burger booth for the volunteers, and Riggs saw the potential to do more. She became the assistant for two years and then took over the operation completely in 1992, adding a full menu. Right away she ordered 830 dozen eggs instead of 13 dozen. She now orders 700 pounds of chicken breast from Sysco and insists on only cooking a Publix hamburger.

"The hardest part is fixing food for 2,000 people. We have figured out what we can do, and we do it well," said Riggs.



Photos courtesy Darlene Riggs

So well, in fact, that Riggs, 76, was named the PGA Volunteer of the Year in 2013.

"I was shocked and also very honored. This is a labor of love. I truly enjoy it, and I see what THE PLAYERS does for the community. Millions of dollars go back into the area," she said.

Riggs said it feels like a family reunion when she gets to see the volunteers each year and work with her staff of 100.

"I just love them all," she said.

One of her staff, Koji Okamoto, has traveled from California for four years just to "make the toast," said Riggs, impressed with his dedication.

Riggs' favorite story is about one volunteer who was very upset when she asked for rye toast, and the diner did not have any. The next morning, Riggs had it on the menu. Years later when it was time for the woman to retire from her position due to health reasons, she arrived in her wheelchair with a gift for Riggs. The woman had somehow found out that Riggs was a Georgia Bulldog fan, so she bought Riggs a PGA hat with a Bulldog logo on the side.

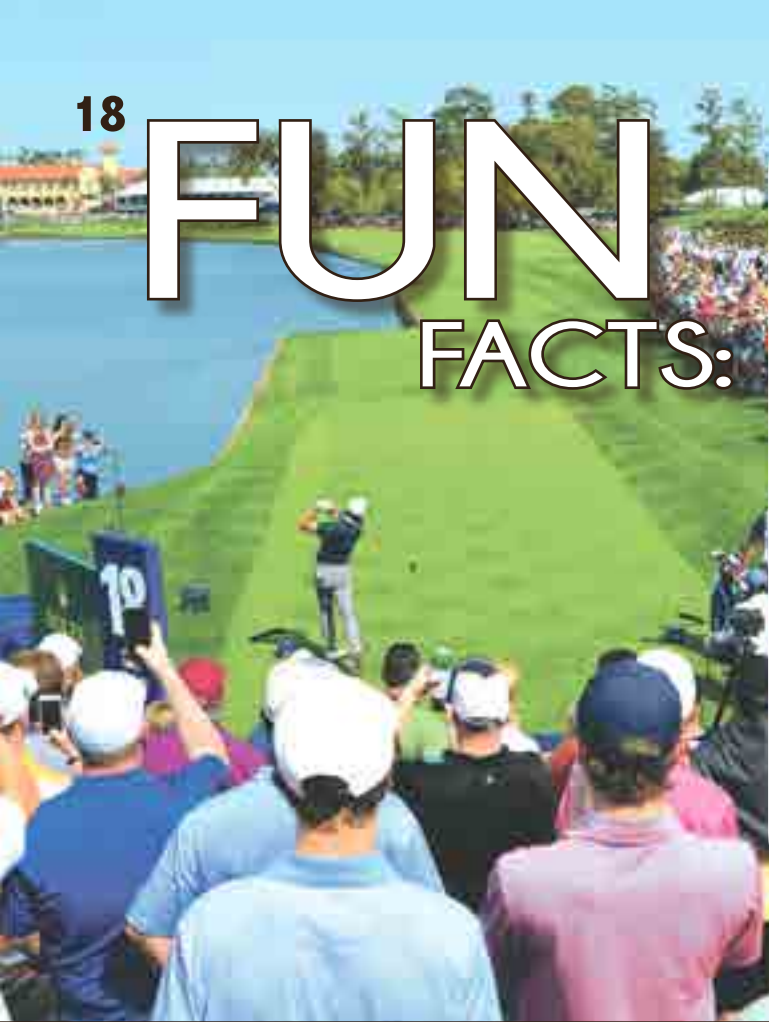
"It was the kindest thing for her to take her time to do this for me. I was touched by that."

Permanent restroom facilities (filtered drinking water also available)

- Near No. 10 tee/No. 16 tee
- Wine & Dine on 9 (near No. 5 green/No. 9 fairway)
- Behind No. 16 green (near The Grove)
- Taste of JAX (Located behind No. 11 green and No. 12 tee)

18

FUN FACTS:



\$1 – Amount that former PGA TOUR Commissioner Deane Beman paid to purchase the 415 acres of swampland where TPC Sawgrass now sits

15 – minutes it takes to cut a hole location and replace the old hold location

84 – number of bunkers on THE PLAYERS Stadium Course – 52 on the front nine and 32 on the back. No. 17 is the only hole on the course that has one bunker.

2.5 – rough height, in inches 69 feet, 7 inches– distance of Jhonattan Vegas' birdie putt on the 17th hole, marking the longest putt ever made on the 17th hole

15 – international players who have won THE PLAYERS; from 11 different countries (Australia, Canada, Germany, Scotland, South Africa, South Korea, Spain, Sweden, New Zealand, Northern Ireland, Zimbabwe)

Photo courtesy PGA TOUR



Call to learn about our current specials

FIND US ON FACEBOOK



904-567-0269 STARLINGLIVING.COM



STARLING AT NOCATEE

Independent Living

885 Crosswater Pkwy. Ponte Vedra, FL 32081

Those who do not learn history, are doomed to repeat it.



Fiduciary Scott A. Grant

2021 is the 20th anniversary of Tiger Woods' famous Better than Most Putt on the Island Green 17th hole

COMPETITION STORIES

Other notable anniversaries this year:

- 5 years: Jason Day (2016)
- 10 years: K.J. Choi (2011)
- 20 years: Tiger Woods (2001)
- 25 years: Fred Couples (1996)
- 30 years: Steve Elkington (1991)



Fred Couples



Jason Day

Photos courtesy PGA TOUR



K.J. Choi



Mandarin NewsLine



The Creek Line



Ponte Vedra NewsLine

Advertising opportunities available. Call 904-886-4919 or visit www.floridanewsline.com



Rebecca Thomson
 Marketing & Sales
 (724) 968-7602 cell
Rebecca@FloridaNewsline.com



Linda Gay
 Marketing & Sales
 (904) 607-5062 cell
Linda@FloridaNewsline.com

Now open — the only orthopedic and spine specialty hospital in Jacksonville

*Personalized care to help
you get back to the things
you love*



*Schedule now at Performance Orthopedics & Spine
Specialty Hospital at Ascension St. Vincent's*

The right care for your joint, neck and back pain is now right here in Jacksonville. At Performance Orthopedics & Spine Specialty Hospital, your doctors and care team are trained in the latest best practices and technology, including robotic-assisted devices, and can perform minimally invasive procedures, which may result in a shorter stay and faster recovery. And we're with you through every step of your care — from pre-surgery to rehabilitation. So take the first step to living with less pain.

Performance
Orthopedics & Spine
Specialty Hospital

 **Ascension St. Vincent's**

Outcomes by HOPCo



Get the orthopedic care
that's right for you at
PerformanceOrthoSpine.com



**Ascension St. Vincent's
Southside**
4201 Belfort Road
Jacksonville, FL 32216

THE PLAYERS Lobby

unveiled at Nemours Children's Specialty Care

At a ribbon-cutting ceremony in November 2020, officials, doctors, patients, donors and friends celebrated the dedication of THE PLAYERS Lobby at Nemours Children's Specialty Care in Jacksonville. The \$3.5-million renovation represents a total refresh of the space, the first major renovation project since the clinic opened in 1991. THE PLAYERS donated the lead gift of \$500,000, which renamed the Nemours lobby, which serves as the gateway into the clinic to more than 100,000 patients and families each year when they come for appointments including complex care medical expertise.

"THE PLAYERS is honored to support Nemours' leading efforts in improving the lives of children and families across Northeast Florida and beyond," Jared Rice, executive director of THE PLAYERS said at the time. "This new lobby is symbolic of the quality, excellence, and compassionate care patients receive, and we are honored to help welcome them when they enter these doors."

Among the new and refurbished features of THE PLAYERS Lobby at Nemours Children's Specialty Care are:

- New entrance sliding doors and wayfinding, allowing for ease of entry.
- Open-floor plan and new windows allowing more light and accentuating the location on the St. Johns River.
- A new café for visitors and employees with riverfront, outdoor seating. A donation from the Hodges family, the Hugs from Hunter 3 Café honors their three sons who passed away after battling the same rare disease, dyskeratosis, a genetic form of bone marrow failure, which has been identified in fewer than 30 cases worldwide.

- Upgraded accessibility, including adjusted heights for tables and seating, and new family restrooms on the ground floor.

- The lobby's landmark model train received a new display case thanks to a \$50,000 gift from the Tom Coughlin Jay Fund, allowing better accessibility for the retiree volunteer group that changes the train décor seasonally.

- Enhanced access to the outdoors and butterfly garden.

Nemours is the sponsor of the Kids Zone at THE PLAYERS Championship.



Matt Welch (THE PLAYERS Vice-Chair of Spectator Services), Jared Rice (THE PLAYERS Executive Director), Dr. Larry Moss (Nemours Children's Health System President and CEO), Norah, Megan and Barry Sproles (patient family), Dr. Gary Josephson (Chief Medical Officer, Nemours Jacksonville Specialty Care)


Photo courtesy PGA TOUR

- Military appreciation activities for THE PLAYERS Championship 2021 have been amended to reflect the quality standards and commitment to our greatest priority: the health and safety of all.
- In support of heightened military restrictions limiting large gatherings and adherence to comprehensive health and safety protocols, THE PLAYERS Championship 2021 will not include a Military Appreciation ceremony, concert, nor hospitality venue (Patriots Outpost) that traditionally hosts thousands of military members and their families.
- Even though on-site celebratory activities have changed, THE PLAYERS maintains its commitment to welcoming northeast Florida military members.
- Complimentary admission will be provided to active duty, retired, reserve, and National Guard members and one dependent on Tuesday, March 9 and Wednesday, March 10. Valid identification and credentials are required. Veterans with valid identification will receive a 50 percent discount for admission Tuesday, March 9 and Wednesday, March 10 (Limited to two tickets per veteran).




Photo courtesy PGA TOUR

Military Appreciation update



Cypress Village
Explore. Discover. Celebrate.

*Independent Living • Personalized Assisted Living
Skilled Nursing • Alzheimer's & Dementia Care
On-Site Rehab • Respite Care*



4600 Middleton Park Circle East • Jacksonville FL 32224
904-807-6190 • cypressvillageretirement.com



Kids!

Learn Golf and Life Skills for a Lifetime

Year-round classes

Summer Camps

Tournaments

Girls Golf

www.firstteenorthflorida.org
(904) 810-2231

Selma Tillman Collier
Realtor®



YOUR TRUSTED REAL ESTATE ADVISOR
SERVING NORTHEAST FLORIDA FOR 15 YEARS
MULTI-MILLION DOLLAR PRODUCER
FIVE STAR PROFESSIONAL

Inventory is low. We have more buyers than sellers. If you would like a free, no obligation home evaluation, call me today!

www.SelmaCollier.com
stcollier@comcast.net
904-704-3141



BERKSHIRE HATHAWAY
HomeServices
Florida Network Realty

11576 San Jose Boulevard
Jacksonville, FL 32223



When others
can't, we can.

Providing treatment options for even the most complex neurological conditions and disorders is what we do best. In fact, patients from throughout the Southeast are referred to us for advanced care found only at leading academic health centers.

Whether helping a patient with complications from a stroke, multiple sclerosis or brain tumor, our interdisciplinary teams provide personalized care using leading-edge technology and the latest research aimed at providing the best possible outcomes.

Visit UFHealthJax.org/neuroscience to learn more or call 904.383.1022 to make an appointment.



Neuroscience Institute

UF Health accepts most major commercial insurance plans, including TRICARE.

New!

Announcing Ponte Vedra Beach's *Ultimate Retirement Community*



State-of-the-art Clubhouse with beautiful, open views

Bridging Gorgeous Homes *With A Resort Lifestyle*

Announcing an exciting, new community truly worthy of the Vicar's Landing name that bridges safety and security with freedom, fun, and



Spacious Flats with up to 2,125 sq. ft. of living



Located right here in beautiful Ponte Vedra Beach

convenience. From housing and dining to transportation and health care, you'll be covered through every phase of living. Learn more about luxury living at the all-new Vicar's Landing at Oak Bridge.

Hurry, phase one is selling out fast!



Quality on-site health care services

VICAR'S LANDING AT OAK BRIDGE



Life Choice Community™

904.285.6000 | VicarsLanding.com