

St. Johns County School Directory

2024 – 2025

Featuring all St. Johns County schools

**Brought to you by The CreekLine
and Ponte Vedra NewsLine**



904.886.4919 • www.floridanewsline.com

The pediatric health care your child needs, close to home.



Wolfson Children's Behavioral Health

Central Scheduling: 904.376.3800

Bartram/Mandarin

13241 Bartram Park Blvd., Suite 1901
Jacksonville, FL 32258

Baptist HealthPlace at Nocatee

400 Colonnade Dr., Suite 200
Ponte Vedra, FL 32081

Wolfson Children's Cardiology

Baptist Medical Center South

14540 Old St. Augustine Rd.
Medical Office Building 2, Suite 2471
Jacksonville, FL 32258
904.202.8550

Wolfson Children's Emergency Centers

Baptist Medical Center South

14550 Old St. Augustine Rd.
Jacksonville, FL 32258
904.271.6060

St. Augustine

461 Outlet Mall Blvd.
St. Augustine, FL 32084
904.517.5713

Wolfson Children's Imaging Centers

Central Scheduling: 904.202.8888

Baptist HealthPlace at Nocatee

400 Colonnade Dr., Suite 150
Ponte Vedra, FL 32081

Baptist Medical Center South

14540 Old St. Augustine Rd.
Medical Office Building 3, Suite 3130
Jacksonville, FL 32258

Wolfson Children's Rehabilitation

Central Scheduling: 904.202.4200

Baptist HealthPlace at Nocatee

400 Colonnade Dr., Suite 110
Ponte Vedra, FL 32081
(Also home to Wolfson Children's Rehabilitation – Intensive Therapy Center)

Baptist Medical Center South

14534 Old St. Augustine Rd.
Medical Office Building 3, Suite 3330
Jacksonville, FL 32258

Baptist Pediatrics & Baptist Primary Care

Baptist Primary Care

Baptist HealthPlace at Nocatee
400 Colonnade Dr., Suite 160
Ponte Vedra, FL 32081
904.824.1020

Baptist Pediatrics

Baptist HealthPlace at Nocatee
400 Colonnade Dr., Suite 200
Ponte Vedra, FL 32081
904.686.7577

Baptist Primary Care

520 A1A North, Suite 101
Ponte Vedra Beach, FL 32082
904.273.6900

Baptist Primary Care

832 A1A North, Suite 06
Ponte Vedra Beach, FL 32082
904.834.3793

Baptist Primary Care

550 Durbin Pavilion Dr., Suite G101
St. Johns, FL 32259
904.770.2095

Baptist Primary Care

30 Ardisia Lane
St. Johns, FL 32259
904.287.2794

Baptist Primary Care

1310 County Road 210 W.
St. Johns, FL 32259
904.824.4407

Baptist Primary Care

110 Hampton Point Dr.
St. Augustine, FL 32092
904.484.7772

Baptist Primary Care

141 Hilden Rd., Suite 201
Ponte Vedra, FL 32081
904.825.1941

Baptist Primary Care

230 Village Commons Dr.
St. Augustine, FL 32092
904.940.1441



Visit baptistjax.com/services/pediatrics for information on other pediatric providers, services and locations.

Welcome from the Superintendent



With

great excitement, I welcome everyone back for the 2024-2025 school year! To our entire district family, I hope you had a refreshing summer, are renewed, and are ready to launch into a new year of learning. In this anticipatory time filled with back-to-school preparations, take a moment to set goals for the year ahead. Get ready for new friendships to be made, new experiences to be had, and new challenges to conquer.

I am incredibly proud of the accomplishments of our schools. St. Johns County students scored highest among the 67 Florida school districts on the F.A.S.T. and B.E.S.T. assessments. Our students scored first in the state in English Language Arts - Grades 3 – 10; Math - Grades 3, 4, 8; Science - Grade 5, and End-of-Course exams in Algebra I, Biology, Civics, and US History. These successes reflect our staff and students' hard work and dedication to exceed expectations repeatedly. Let us build on this momentum as we strive for excellence in the year ahead.

Over the summer months, our dedicated staff members have worked diligently to prepare for the year ahead. Teachers planned engaging lessons, administration evaluated school safety, and all staff participated in a multitude of professional learning designed to meet the diverse academic needs of our students. As evidenced by the extensive list of professional learning opportunities this summer districtwide, our staff is dedicated to continued growth. The commitment to ongoing improvement will ensure our students receive a high-quality education at our schools.

As our district grows, we must maintain excellence across St. Johns County. The final touches are being completed for two new K-8 schools opening in time for the 2024-2025 school year. Lakeside Academy is in north central St. Johns County. The Lakeside Academy Sasquatches will be led by Dr. Jesse Gates. Trout Creek Academy is located within the Shearwater development in northwest St. Johns County. Katie O'Connell will lead the Trout Creek Academy Terrapins. In addition, ongoing improvements are being made to our existing schools districtwide. We anticipate opening K-8 School PP in the RiverTown community in northwest St. Johns County for the 2025-2026 school year.

I am so proud to serve as superintendent of St. Johns County Schools. As we begin a new year, I feel overwhelming gratitude toward our passionate teachers and staff and am excited to welcome back our students for another great school year. Thank you, families, for your continued support. Let's make 2024-2025 our best year yet!

Sincerely,

Jim Foxson



450 State Road 13 North,
Suite 106 PMB 101, St. Johns FL 32259
(904) 886-4919
www.FloridaNewsLine.com

Publisher Mark Pettus
Publisher@FloridaNewsLine.com

Editor Martie Thompson
editor@floridanewsline.com

Bookkeeper Emily Whitehead
accounting@floridanewsline.com

Advertising Sales Linda Gay
Linda@floridanewsline.com
(904) 607-5062 cell

The St. Johns County School Directory is a free publication of Florida NewsLine that reaches more than 50,000 families via distribution to all public schools in the St. Johns County School District. Most content is supplied by the St. Johns County School District. Submission of articles and photographs are accepted via email to editor@floridanewsline.com. The writers' opinions do not necessarily reflect the opinion of Florida NewsLine. Advertising rates are available by request.

Florida NewsLine is not responsible for advertisement content or accuracy of information provided by its advertisers, nor does it endorse any of the products or services included in this publication. ©2024.



INK! || INVESTING IN KIDS ||

Investing in students and empowering teachers through innovative programs and resources.

- Classroom & School Grants
- Community Literacy Events
- Five Learning Years (FLY)
- PIVOT Mentoring & Tutoring
- College/Tech School Scholarships
- Take Stock in Children
- Teacher of the Year Celebration
- Tools 4 Schools

Join us in making an impact in our community!

www.ink-stjohns.org



St. Johns County School Board (as of July 31, 2024)



District 1

Beverly Slough, Chair
beverly.slough@stjohns.k12.fl.us



District 2

Anthony Coleman, Sr., Vice Chair
anthony.coleman@stjohns.k12.fl.us



District 3

Jennifer Collins
jennifer.collins@stjohns.k12.fl.us



District 4

Kelly Barrera,
kelly.barrera@stjohns.k12.fl.us



District 5

Patrick Canan
patrick.canan@stjohns.k12.fl.us

School Board meetings are held on the second Tuesday of the month at 4 p.m. at the School Board Administration Building at 40 Orange Street, unless otherwise posted.

Workshops are held at 9 a.m. on the first and fourth Tuesday of the month as needed.

The St. Johns County School Board has earned the designation of Master Board.

Dear St. Johns County Parents, Teachers and Students:

We at Florida NewsLine, publisher of The CreekLine, Ponte Veda NewsLine and Mandarin NewsLine community newspapers, are pleased to continue our annual tradition of publishing the St. Johns County School Directory with this edition for the 2024 - 2025 school year. We hope you find the information it contains valuable.

Inside, you will find information about the school district, including a listing with contact information of the school board members as well as school board meeting information, a map of the schools, and guidance on how to enroll your child in school. Details for each St. Johns County school, including contact information and fun historical tidbits, round out the publication.

This directory is made possible through the assistance of St. Johns County School District Director of Communications Christina Upchurch and her staff and through the generosity of our valued sponsors, whose advertisements appear in this

issue. Without them, this directory would not exist and we encourage you to visit and patronize their businesses.

Finally, thank you, our readers, for your continued support of The CreekLine, Ponte Veda NewsLine, and Mandarin NewsLine, as well as our other quarterly and specialty publications. For more than 24 years, you have welcomed us into your home and we are proud to be a part of our special community.

Best wishes from all of us at Florida NewsLine for a productive school year.

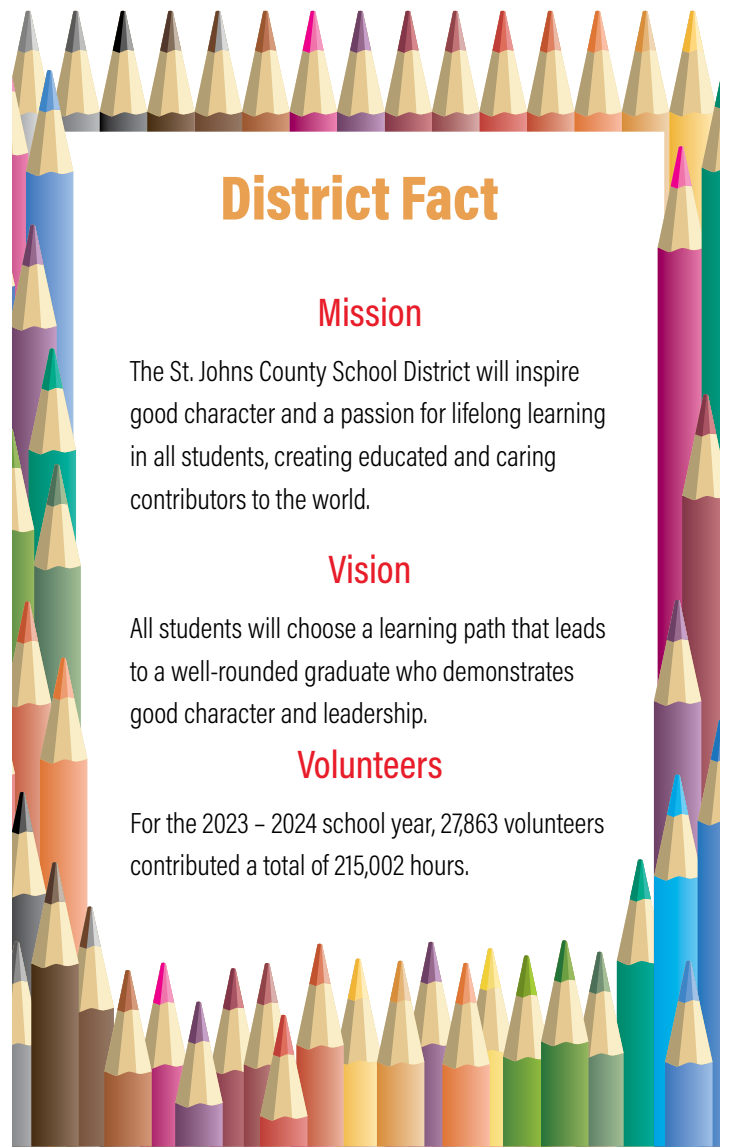
Florida NewsLine team

Mark Pettus,
Publisher

Martie Thompson,
Editor

Linda Gay,
Advertising Sales

Emily Whitehead,
Office Manager



District Fact

Mission

The St. Johns County School District will inspire good character and a passion for lifelong learning in all students, creating educated and caring contributors to the world.

Vision

All students will choose a learning path that leads to a well-rounded graduate who demonstrates good character and leadership.

Volunteers

For the 2023 - 2024 school year, 27,863 volunteers contributed a total of 215,002 hours.



St. Augustine Dance Academy



WHERE EVERYONE CAN

BE A STAR!

MANY DANCE STYLES:

- Ballet
- Tap
- Jazz
- Hip Hop
- Contemporary
- Acro



**FAMILY BASED PRICING
FOR WALKERS TO AGE 18!**

TWO LOCATIONS:
210/Nocatee & World Golf Village

904-940-1818
www.staugdance.com



**MENTION THIS AD FOR A
\$50 GIFT CARD
WITH PAID REGISTRATION**

(only for new families)

Call for a free trial today!

John A. Crookshank Elementary School Grades K-5



Photo Credit: St. Johns County School District



Photo credit:
St. Johns County School District

Principal
Patrick Roach

John A. Crookshank Elementary (CES), home of the Cougars, is a proud Title I (PK-5) neighborhood school located in historic St. Augustine. At CES, we are empowering students to contribute to a connected society by offering a challenging and engaging academic experience. We encourage our students to build a heart for their community and an appreciation for our diverse culture. In addition to academics, we focus on the whole child, through an assortment of visual and fine arts programs, character education opportunities by means of our school-wide PBIS initiative, and physical development through our physical education and Extended Day programs. The faculty and staff strive to build lasting relationships that maximize the learning and social experiences of our students, so all students are equipped with a growth mindset and the skills necessary to address and overcome any challenges they may face. We believe that when we work together, we all succeed.

1455 N. Whitney Street St. Augustine, FL 32084 (904) 547-7840
www-ces.stjohns.k12.fl.us
 Year Opened: 1959 Mascot: Cougars

Cunningham Creek Elementary Grades K-5



Photo Credit: Michael Clark, Webmaster, St. Johns County School District



Photo credit:
St. Johns County School District

Principal
Jessica McCool

Cunningham Creek Elementary's (CCE) school colors are red, white and black and the mascot is the cardinal. The school is approximately 80,000 sq. ft. on roughly 37 acres. Cunningham Creek Elementary School is a community of Caring Cardinals, committed to creating an atmosphere that encourages students to develop to their greatest potential. Through the school's commitment to Communicating, Caring and achieving Excellence, all Cardinals will soar with a passion for lifelong learning. At Cunningham Creek, we will build strong bodies, hearts, minds, and spirits so we can live, love, learn, and lead.

1205 Roberts Road St. Johns, FL 32259 (904) 547-7860
www-ccs.stjohns.k12.fl.us
 Year Opened: 1995 Mascot: Cardinals

Durbin Creek Elementary Grades K-5



Photo Credit: Michael Clark, Webmaster, St. Johns County School District



Photo credit:
St. Johns County School District

Principal
Ashley McCormick

Durbin Creek Elementary (DCE), home of the Explorers, displays planet Earth as their school logo. The school's history dates back to the opening of Fruit Cove School in 2001; DCE was, at the time, part of the K-8 grade student body. Current enrollment at DCE is approximately 1004 students. DCE offers a variety of enrichment opportunities through clubs such as Girls on the Run, Art Club, Student Council, Safety Patrol, and Chorus. The school's mission statement is, "Making positive contributions to society by expanding minds to explore our expanding world."

4100 Race Track Road St. Johns, FL 32259 (904) 547-3880
www-dce.stjohns.k12.fl.us
 Year Opened: 2003 Mascot: Explorers

District Fact Students

Enrollment (as of May, 2024) represents 114 different countries speaking 79 different languages.

K-12 Total: 52,000

Elementary: 22,335

Middle School: 11,949

High School: 16,131

Alternative Schools: 404

Virtual School: 432

First Coast Technical College: 535

The student body represents 504 plans.

W.D. Hartley Elementary School Grades K-5



Photo Credit: St. Johns County School District



Photo credit:
St. Johns County School District

Principal
Nicole Appelquist

W. D. Hartley Elementary School (HES), home of the Hawks, is located in the community of The Shores in south St. Augustine. Hartley Elementary was founded in 1981, and currently serves approximately 600 students. The vision statement is that Hartley Elementary will grow a community of responsible, confident, caring and educated citizens. The mission statement is Hartley Elementary School will provide a safe and caring environment where every student's academic, emotional and social needs are nurtured and challenged. Teachers and staff work together on building relationships with students and building student character that will create a community in which children are inspired and empowered to attain their full potentials and embrace lifelong learning.

260 Cacique Drive St. Augustine, FL 32086 (904) 547-8400
www-wdh.stjohns.k12.fl.us
 Year Opened: 1981 Mascot: Hawks

Hickory Creek Elementary Grades K-5



Photo Credit: Michael Clark, Webmaster, St. Johns County School District



Photo credit:
St. Johns County School District

Principal
Yvette Cubero-Gonzalez

Hickory Creek Elementary (HCE) is the home of the Hawks and shares a larger campus with Switzerland Point Middle School. The two schools collaborate academically and socially throughout the school year. By identifying the way individual students learn, teachers prioritize academic rigor in an exciting atmosphere that emphasizes creativity and growth, and places children at the center of their learning experience. The mission of HCE is to inspire in all students a passion for learning and for achieving their maximum social and academic potential. The HCE motto is "First we love them, then we teach them."

235 Hickory Creek Trail St. Johns, FL 32259 (904) 547-7450
www-wdh.stjohns.k12.fl.us
 Year Opened: 2005 Mascot: Hawks



We are committed to providing the highest level of care with our dedicated staff and our personalized approach to health care for women.

SERVICES:

- Obstetrics & Gynecology
- Hormone replacement therapy
- Infertility consultation
- Minimally invasive and robotic surgery
- In-office surgery / procedures
- Contraception management
- IUD and Nexplanon insertion and removal
- Colposcopy using Dysis technology
- Management of routine care and gynecologic problems



Christen Trogolo DNP APRN, Frank Trogolo MD, Jose Nieves-Melendez MD

We accept most private insurance carriers

Baptist Medical Center South
 14540 Old St. Augustine Rd., Suite 2391
 Jacksonville, FL 32258

904-647-6946
www.trogolobgyn.com

R. B. Hunt Elementary School Grades K-5



Photo Credit: St. Johns County School District



Photo credit: Leonard's Studios

Principal
Amanda Garman

R. B. Hunt Elementary School, is built on a belief that all children can learn. The staff works to provide children with a supportive, caring environment that develops self-esteem, self-motivation, and a sense of responsibility. The school also strives to provide every opportunity for maximum student achievement and to recognize and stimulate special talents in all students. The educational environment and the teaching strategies are designed to meet the goals and objectives of a strong curriculum. The overall vision is to prepare students to become responsible citizens and to take their place as productive members of the community. Education is a cooperative effort among home, school, and community and the administration at R.B. Hunt strives to build this partnership.

125 Magnolia Drive St. Augustine, FL 32080
www-rbh.stjohns.k12.fl.us
Year Opened: 1959 Mascot: Islanders

Julington Creek Elementary Grades K-5



Photo Credit: Michael Clark, Webmaster, St. Johns County School District



Photo credit: Leonard's Studios

Principal
Dr. Joy Reichenberg

Opening on Sept. 8, 1972, the school was first known as Julington Creek School and served grades one through eight. Six years later, a multi-purpose room was added. During the 1970s, kindergarten and ninth grade were added. When Allen D. Nease High School opened in 1980, Julington Creek sent its seventh, eighth and ninth graders to Nease and the school became a K-6. Once Switzerland Point Middle School was opened in 1991, the sixth graders moved there making Julington Creek Elementary (JCE) its present K-5 elementary. The mission of JCE is to enhance the development of the total child by providing quality instruction in the core academics, related arts, technology/engineering and overall wellness. This is possible through rigorous academics, high expectations, continuous teacher professional development, various extracurricular student activities, collaboration with Fruit Cove Middle school, and strong community support.

2316 Race Track Road St. Johns, FL 32259 (904) 547-7980
www-jce.stjohns.k12.fl.us
Year Opened: 1972 Mascot: Jaguars

Ketterlinus Elementary Grades K-5



Photo Credit: St. Johns County School District



Photo credit: Leonard's Studios

Principal
Kathy Tucker

Ketterlinus was named after Elizabeth Warden Ketterlinus, the oldest daughter of William Grey Warden. She lived in Castle Warden, which is now known as Ripley's Museum. Ketterlinus Elementary originally opened in 1924 as St. Augustine High School on land donated by Mrs. Ketterlinus. In 1928, the school board renamed the school from St. Augustine High School to The Elizabeth Ketterlinus High School. In 1981, Ketterlinus became a middle school serving 6th-8th graders. Finally, in 1991, after major renovations were completed, it became Ketterlinus Elementary School (KES), home of the Dolphins. The school currently services students VPK-5. The mission of KES is to accomplish the highest academic achievement possible for each student in a safe learning environment that is staffed by caring, highly qualified teachers and staff. KES is founded on a belief that "all children can learn and succeed" but not on the same day in the same way. KES believes that increased student achievement, along with school safety, should be top priorities; and high achievement can happen through the initiatives on campus including Character Counts!, professional learning communities, connection between home and school, and challenging academic curriculum.

67 Orange Street St. Augustine, FL 32084 (904) 547-8540
www-kes.stjohns.k12.fl.us
Year Opened: 1925 Mascot: Dolphins

District Fact Schools

- 18 Elementary Schools (K-5)
- 9 Academies (K-8)
- 7 Middle Schools (6-8)
- 9 High Schools (9-12)
- 1 Technical College
- 2 Alternative Schools (K-12)
- 1 Virtual School
- 3 Charter Schools
- 2 Juvenile Justice Facilities

First Coast Technical College: As the first Technical College operated by St. Johns County School District, this accredited school has 19 programs of study ranging from auto-

motive services to practical nursing and firefighter/EMT. To learn more about the school and its programs, visit <http://fctc.edu/>.

The St. Johns County School District is fully accredited as a quality school system by the Southern Association of Colleges and Schools Council on Accreditation and School Improvement (SACS CASI), a division of AdvancED Accreditation. AdvancED Accreditation is the highest level of accreditation that a school system can receive.

Otis A. Mason Elementary Grades K-5



Photo credit: Leonard's Studios

Principal
Monique Keaton

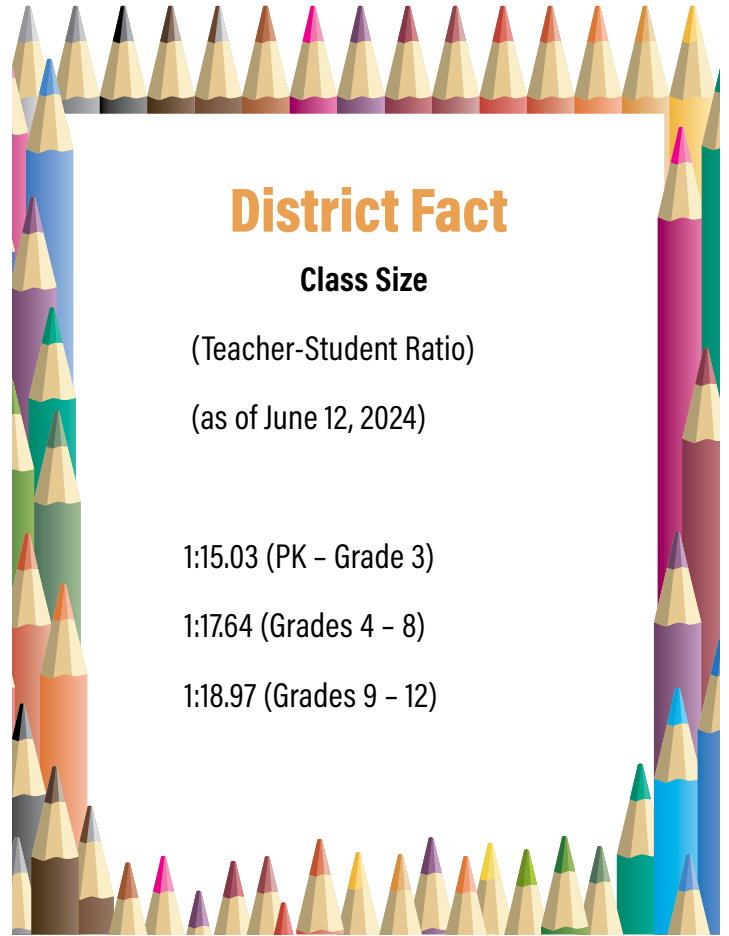
Photo Credit: St. Johns County School District

The mission of Otis A. Mason Elementary (OME) states, "We believe student success is fostered by a continuous commitment to improvement, which ensures well-rounded and motivated learners. We do this by maintaining a safe and dynamic learning environment, promoting high expectations for all students, nurturing determination, developing personal relationships, and involving our community." Our goals are to maintain a safe and dynamic learning environment, promote exceptionally high expectations for all students, spark self-determination, develop personal relationships with all stakeholders, hold all accountable for continuous improvement, and purposefully involve our community. We genuinely believe that at OME, your Character Counts! "The Mason Way", is one that nurtures a passion in every child for personal success, good character, and a desire to learn, explore, and better themselves as they grow to be responsible members of our community. "The Mason Experience" is an epic and transformational day in the life of exceptionality for all from start to finish.

207 Mason Manatee Way St. Augustine, FL 32086 (904) 547-8440

www-mes.stjohns.k12.fl.us

Year Opened: 1992 Mascot: Manatees



District Fact

Class Size

(Teacher-Student Ratio)

(as of June 12, 2024)

1:15.03 (PK – Grade 3)

1:17.64 (Grades 4 – 8)

1:18.97 (Grades 9 – 12)

DO YOU KNOW A
CHILD WHO LOVES TO
SING?

 **ST. JOHNS COUNTY LOCATION
NOW AUDITIONING 2ND – 6TH GRADE!**

**NO FEE TO AUDITION • NEED-BASED SCHOLARSHIPS AVAILABLE
FOR GRADES K-12 – CONTACT US TO LEARN ABOUT OUR OTHER LOCATIONS**



JAX CHILDREN'S CHORUS

(904) 353-1636

JAXCHILDRENSCHORUS.ORG

INFO@JAXCHILDRENSCHORUS.ORG

Ocean Palms Elementary Grades K-5



Photo Credit: Michael Clark, Webmaster, St. Johns County School District



Photo credit: Leonard's Studios

Principal
Tiffany Cantwell

Ocean Palms Elementary (OPE) opened with the vision shared by area students, parents, and the teachers of "Our focus is the child, diversity is the strength and assessment is the cornerstone to both learning and teaching." Ocean Palms, the home of the Otters, opened with Michael Parrish as its first principal and approximately 600 students. Mr. Parrish stayed until his retirement in 2011 and became legendary for knowing every child by name and something specific about them. He was the founder of this unique learning community that had a strategic focus on the "whole child," a decentralized structure and tremendous parental support that continues today. Each and every student is the focus, because at OPE, every day, everyone, and everything matters.

355 Landrum Lane Ponte Vedra Beach, FL 32082
www-ope.stjohns.k12.fl.us
Year Opened: 1996 Mascot: Otters

Osceola Elementary Grades K-5



Photo credit: St. Johns County School District



Photo credit: St. Johns County School District

Principal
Jessley Hathaway

Osceola Elementary (OES) is located just outside the historic district of St. Augustine. OES is a Title I School that serves students from pre-kindergarten to fifth grade. The school prides itself on having an exceptionally committed and dedicated staff, parents, PTO, and business/faith-based partners. OES provides its students with one-to-one contact with caring adults, a safe place to learn and grow, opportunities to give back to the community, and a healthy start. The mission is "Osceola Elementary will be a family of learners working to become successful in academic and social settings. By nurturing determination, grit, and a growth mindset in every student, we will create life-long learners." This belief reflects the vision that "Better Never Quits!" The teachers and staff strive to fulfill this mission statement through rigorous instruction that ensures every student learns at high levels as the school functions as a Professional Learning Community. In addition, Osceola offers resource classes in art, music, media, and physical education as well as extracurricular activities that include multiple music performance groups (chorus, Orff, violin, guitar), Chess Club, basketball, soccer, Kind Crew, and Girls on the Run.

1605 Osceola Elementary Road St. Augustine, FL 32084 (904) 547-3780
www-oes.stjohns.k12.fl.us
Year Opened: 1991 Mascot: Wildcats



Come Join Our
Award-Winning Studio Art
Curriculum for Ages 3 & Up

**REGISTER
NOW for FALL
CLASSES!**



Your little artist wants to change the world. Let's get them ready.

www.ChildrensArtClasses.com

Contact us:
(904)612-7557



Palencia Elementary Grades K-5



Photo Credit: Michael Clark, Webmaster, St. Johns County School District



Photo credit: Leonard's Studios

Principal
Catherine Goodrich

Palencia Elementary School (PES) has been constructed to Green Building Standards and includes many unique qualities. Since the school opened, students have used technology seamlessly throughout the school day to enhance their understanding of core instruction and practice academic skills. The school's mission statement routinely comes to life, as "Palencia Pirates" (students, staff, and even School Advisory Council members) use much gusto to chant and act out with hand motions: "We are a C.R.E.W setting S.A.I.L. into tomorrow's world." Pirate staff teach young pirate students that C.R.E.W. stands for Creative, Responsible, Engaged, and Worthy, while the letters in S.A.I.L. represent Successful, Adventurous, Innovative Leaders. Two core values resound at PES: we are lifelong learners, and we take care of each other.

355 Palencia Village Drive St. Augustine, FL 32095 (904) 547-4010
www-pes.stjohns.k12.fl.us
 Year Opened: 2012 Mascot: Pirates

Picolata Crossing Elementary Grades K-5



Photo Credit: Florida NewsLine



Photo credit: St. Johns County School District

Principal
Brian Morgan

At Picolata Crossing Elementary School (PCES), all students will be provided with an exceptional education that leads to a well-rounded individual who demonstrates good character, leadership, and critical thinking. PCES, home of the Pumas, serves Pre-K through fifth grade students. The school is well known for its positive school culture and supportive parents. Students, staff, and community enjoy participating in celebrations that truly focus on building a positive climate and making lifelong memories worth sharing with neighbors. Positive, powerful relationships are built between students and teachers by creating a fun learning environment and a lasting commitment to the community that supports them. Pumas are recognized for demonstrating success in Academics, Behavior, and Character Counts! PCES inspires good character and a passion for lifelong learning in all students, creating educated and caring contributors to the world.

2675 Pacetti Road St. Augustine, FL 32092 (904) 547-4161
www-pce.stjohns.k12.fl.us
 Year Opened: 2017 Mascot: Pumas



FLORIDA ELITE SOCCER ACADEMY

SOMETHING FOR EVERYONE!

PROGRAMS FOR BOYS & GIRLS AGES 2.5 - 19

ALL SKILL LEVELS / INTRO AND ADVANCED

FLORIDA'S NUMBER 1 SOCCER CLUB

HIGHEST LEAGUE LEVELS IN THE US

PROFESSIONAL COACHING STAFF

WWW.FLORIDAELITESA.COM



Our team at Nemetz Dental Associates is ready to help you with all of your dental needs and we look forward to providing you with personalized service and unparalleled treatment.

Marinela M. Nemetz, D.D.S.
Board Certified Pediatric Dentist

Robert J. Nemetz, D.D.S., M.S.
Adult Dentistry | Periodontics | Prosthodontics

We offer

- Pediatric Dentistry
- Family Dentistry
- Periodontics/ Prosthodontics



Your New Smile Awaits!

Mandarin South Business Center 12421 San Jose Blvd.
Suite 310/320 • Jacksonville, FL 32223

Pediatric Dentistry: (904) 292-2210 Adult Dentistry: (904) 886-4867

We Welcome New Patients

www.nemetzdental.com

PV/PV Rawlings Elementary Grades K-5



Photo Credit: Michael Clark, Webmaster, St. Johns County School District



Photo credit: St. Johns County School District

Principal
Jill Hillier

Ponte Vedra-Palm Valley Elementary (K-2 grades) and Marjorie K. Rawlings Elementary (3-5 grades) merged into one school in 2008. Nestled in the heart of Ponte Vedra Beach, PVPV/ Rawlings Elementary School stands as a beacon of educational excellence and community engagement. Our school prides itself on a comprehensive curriculum that balances academic rigor with creativity, critical thinking, and fun. We have high expectations and provide our students with the support they need to meet their individual goals. Our dedicated staff and faculty go above and beyond to create an inclusive atmosphere where every child feels valued and encouraged to reach their full potential. We believe in the power of community and actively involve parents and local organizations in our mission to enrich the educational experience of our students. Our school is committed to developing well-educated, resilient, and empathetic individuals with good character. The school motto is "Work hard, be kind, be awesome!"

610 A1A North Ponte Vedra Beach, FL 32082 (904) 547-3820 (PV/PV)
(904) 547-8570 (Rawlings)

www.pvmkr.stjohns.k12.fl.us

Year Opened: PV/PV, 1959 Marjorie K. Rawlings, 1992 Mascot: Sea Turtles

South Woods Elementary Grades K-5



Photo Credit: St. Johns County School District



Principal
Angela Rodgers

Originally named Hastings Elementary School, South Woods Elementary (SWE) is the home of the Eagles. Nestled in the southwestern part of St. Johns County, SWE serves families in the rural communities of Armstrong, Elkton, Flagler Estates, and Hastings. Our school is home to St. Johns County's first Community Partnership School, which extends opportunities to our students and their families to achieve greater success: Health and Wellness, Expanded Learning Before or After School, and Collaborative Leadership. The success of our students and families aligns with our school's mission and vision, which the administration, teachers, parents, and all other stakeholders share. South Wood's vision is that "South Woods students will communicate, collaborate, and solve problems in all academic areas to a high standard. Our students will have the necessary digital skills to perform in the school/home/workplace and the global society in which they live. Students will be lifelong learners that exhibit good character and contributors to their neighborhood, community, and world." We strive to improve lives in and out of school.

4750 State Road 206 W. Elkton, FL 32033 (904) 547-8610

www.swe.stjohns.k12.fl.us

Year Opened: 2005 Mascot: Eagles

How to enroll your child in school

All students must register at their home-zoned school. The school district Attendance Zones Locator (www.stjohns.k12.fl.us/zoning/) will identify the correct school.

REQUIREMENTS FOR CHILDREN TO BEGIN SCHOOL

1. Grade placement (Florida State Statute 1003.21)

- Voluntary Pre-K: A child must be four years old on or before Sept. 1.
- Kindergarten: A child must be five years old on or before Sept. 1.
- First Grade: A child must be six years old on or before Sept. 1 AND satisfy one of the following:

- a) Satisfactory completion of kindergarten in a Florida public school.
- b) Satisfactory completion of kindergarten in a non-public school.
- c) Previous attendance in an out-of-state school in which the student was admitted on the basis of age requirements established by the state of residency.

2. Proof of Residency

Certain documents will be required to prove residency. A complete detail of these requirements can all be found in:

Residency process (www.stjohns.k12.fl.us/student/residency/)

Current students must update residency documentation

before transitioning to kindergarten, middle (sixth grade) and high school (ninth grade).

Students with expired residency (e.g. expired lease) will be required to provide updated residency documents.

3. Proof of Immunization

Florida Certification of Immunization, DOH 680 Form (Florida State Statute 1003.22)

Your local St. Johns County Health Department provides free pediatric immunizations. For additional information regarding immunizations, contact:

Florida Department of Health – St. Johns County
(904) 506-6081

200 San Sebastian View

St. Augustine, FL 32084

<http://stjohns.floridahealth.gov/about-us/>

For additional information regarding any health issue for school enrollment, please visit (<http://www.stjohns.k12.fl.us/health/>)

4. Other

- Copy of Birth Certificate
- Proof of Guardianship (if applicable)
- Physical/Health Examination (dated within 12 months of the student's first day of school)

* Social Security Number (optional)

* Academic Records (for students previous enrolled in another school). Although we will request the records from the previous school, placement may be expedited if you have the most recent report card, unofficial transcripts or grades, and the most recent test scores (mandatory prior to registration for Honors or Dual Enrollment classes).

If you would like to complete the registration paperwork in advance, visit www.stjohns.k12.fl.us/student/enrollment/form.



Timberlin Creek Elementary Grades K-5



Photo credit: Cathy Studios

Principal
Linda Edel

Photo Credit: Michael Clark, Webmaster, St. Johns County School District

Timberlin Creek Elementary (TCE) is home to the Eagles and its mission statement is, "We are a family in which everyone is capable of success. We strive for social, emotional, and academic growth for all students fostering a love of learning, supporting creative thinking, and building exemplary character." TCE is a state-of-the-art school located in a rural setting in NW St. Johns County. The school is built on a 39-acre plot of land and consists of an administration building, five houses with eight classrooms in each, multiple playgrounds, and a video production area. TCE fosters a positive school culture by embedding the Character Counts! pillars into academic, social, emotional, and character development domains of learning. The vision at Timberlin Creek Elementary is, "Every student matters. Every moment counts."

555 Pine Tree Lane St. Augustine, FL 32092 (904) 547-7400
www-tce.stjohns.k12.fl.us
 Year Opened: 2005 Mascot: Eagles

Wards Creek Elementary Grades K-5



Photo credit: St. Johns County School District

Principal
Kevin Klein

Photo Credit: Michael Clark, Webmaster, St. Johns County School District

Named after the Wards family, Wards Creek Elementary (WCE) opened in 2007. The inaugural class had the distinct honor of selecting the school mascot which became the Warriors as well as the school colors of black and gold. WCE opened its doors to 680 students. The current projection for enrollment in the upcoming school year is 1,115 students. The school provides services for students from pre-K to fifth grade. The mission statement is, "At Wards Creek Elementary, we ensure Achievement, Learning, and Leadership for ALL." The vision for WCE is to build and sustain a culture that provides a safe environment where all stake holders collaborate to ensure growth and achievement for all. Warriors "shine their LIGHT" by displaying character traits of Leadership, Integrity, Growth Mindset, Heart, and Teamwork.

6555 State Road 16 St. Augustine, FL 32092 (904) 547-8730
www-wce.stjohns.k12.fl.us
 Year Opened: 2007 Mascot: Warriors

James A. Webster Elementary School Grades K-5



Photo credit: Leonard's Studios

Principal
Bethany Groves

Photo Credit: St. Johns County School District

Webster Elementary School (WES) was built in 1959 as a small neighborhood school consisting of two hallways. The school's namesake, James Webster, served as the first principal. From 1971 to 1982, Webster was a sixth-grade center. In 1982, Webster Elementary began serving students in full-time Exceptional Student Education classes and children in grades Pre-K through fifth grade. Four more wings were added that year, along with some permanent outbuildings. Today WES is a proud neighborhood school where new traditions as Wolverines flourish. The school continues to be a diverse school where students are finding new heights of success. A focus on arts enrichment including dance instruction for all students as well as a wide variety of science, arts, sports, and academic clubs and services offered to students via a rich after-school program provide more opportunities for students to develop a wide variety of skills. In 2017, WES became a Community Partnership School, striving to serve the needs, not only of our students, but of our community. The Community Partnership School resources have provided an on-site health kiosk provided by UF Health and a strong partnership of mentorship with Flagler College. The school also uses an extensive PBIS system which reinforces positive consequences for positive decisions and is striving to be a PBIS Model School. Character Counts! instruction helps students develop positive character, learn self-control and evaluate good choices.

420 N. Orange Street St. Augustine, FL 32084 (904) 547-3860
webster.stjohns.k12.fl.us
 Year Opened: 1959 Mascot: Wolverines



- ★ ADHD & Executive Functioning Coach
- ★ Private Tutor
- ★ Anger & Anxiety Management
- ★ Neuropsychotherapy Certified, NPT
- ★ Cognitive Behavioral Therapy Coach
- ★ Educator & Parent
- ★ Workshop Provider
- ★ Step Up For Students
- ★ Approved Direct Pay Scholarship Provider

(412) 926-3760 | achievingkid@gmail.com | achievingkids.com



Sarah Abercrombie,
MS.Ed., NPT
Over 25
Years Experience



THE ST. JOHNS COUNTY SHERIFF'S OFFICE IS WISHING YOU ALL A SUCCESSFUL 2024-2025 SCHOOL YEAR!

FOLLOW SJSO ON SOCIAL MEDIA!

SHERIFF ROBERT A. HARDWICK
 904-824-8304
SHERIFF@SJSO.ORG

X  

WATKINS

ALLERGY AND ASTHMA CLINIC

Powered by Borland Groover



Raquel Suzanne Watkins, MD
Board Certified Allergist & Immunologist
Adult and Pediatric

**Don't let allergy symptoms
get you down!**

**Schedule your appointment
with Dr. Watkins & Team!**

We will get you started on an effective treatment plan that allows you to control your symptoms and

- We focus on our patients' needs first
- Same day appointments
- On-site Physician for personal attention
- Dedicated shot clinic with nurse
 - *open during lunch hours
- Asthma Educators on staff

SCHEDULE TODAY

Two Convenient Locations

13241 Bartram Park Blvd, Suite 2601, Jacksonville, FL 32258 1555 Kingsley Ave., Suite 401 Orange Park, FL. 32073

Accepting most major insurance plans

904-298-1800

www.watkinsclinic.com

Freedom Crossing Academy Grades K-8



Photo Credit: Florida NewsLine



Photo courtesy: St. Johns County School District

Principal
Melissa Lime

Freedom Crossing Academy (FCA), home of the Falcons. Located in the Aberdeen community, FCA will be celebrating its seventh year during the 2024-2025 school year. For the third consecutive year, FCA has been recognized as a Capturing Kids Heart National Showcase School. FCA is also recognized by the FLPBIS Project as a Gold Level Tier 1 and 2 PBIS Model School. At FCA we are committed to fostering positive relationships and creating a nurturing learning environment where students and staff feel connected, supported, and valued every day. FCA's mission statement, "Falcons take FLIGHT!" embodies the qualities we strive to instill in our students and staff: Focus, Leadership, Imagination, Grit, Heart, and Team. Our school vision, "Breaking Barriers," reflects our commitment to innovation and excellence. The FCA campus design, a modification of Patriot Oaks and Valley Ridge Academies, features a third floor with eight classrooms, three science labs, ESE classrooms, a Technology Lab, Business Lab, Skills Lab, and Resource Room, creating an enriching learning environment that promotes high levels of success.

1365 Shetland Drive St. Johns, FL 32259 (904) 547-4232

www-fca.stjohns.k12.fl.us

Year Opened: 2018 Mascot: Falcons

Lakeside Academy Grades K-7



Rendering courtesy St. Johns County School District



Photo courtesy: St. Johns County School District

Principal
Dr. Jesse Gates

Lakeside Academy will serve kindergarten through seventh grade this school year and will be located on approximately 40 acres within Beacon Lake in north-central St. Johns County. It will accommodate approximately 1,500 students. This school has been designed to provide both traditional and non-traditional settings. Classrooms share moveable walls in order to facilitate team-teaching. These features enable teachers and paraprofessionals to work cooperatively to facilitate learning for students through a variety of methods. Lakeside Academy is home of the Sasquatch. The school motto is "Be determined, Be Kind, Be Legendary!"

1455 Twin Creeks Drive St. Augustine, FL 32095 (904) 547-4500

www-la.stjohns.k12.fl.us

Year Opened: 2024 Mascot: Sasquatch

Liberty Pines Academy Grades K-8



Photo Credit: Florida NewsLine, Inc.



Photo credit: Leonard's Studios

Principal
Donny Hoessler

Liberty Pines Academy (LPA) houses grades K-8 and is located in a suburban area in NW St. Johns County. The school is designed to provide each child with an education appropriate for academic, emotional, and social growth in the rapidly changing world. This goal will be achieved by creating positive, child-centered instructional opportunities for our students. The mission of LPA is "everyone is respectful, responsible, ready to learn, and focused on creating positive relationships." The vision at LPA is to ensure high levels of learning and expectations for all students and staff. Through our continuous collaborative efforts, students will have character, knowledge, and skills essential to pursuing their goals and dreams successfully throughout their lives.

10901 Russell Sampson Road St. Johns, FL 32259 (904) 547-7900
www-lpa.stjohns.k12.fl.us
 Year Opened: 2008 Mascot: Wolves

Mill Creek Academy Grades K-8



Photo Credit: Michael Clark, Webmaster, St. Johns County School District



Photo credit: St. Johns County School District

Principal
Dr. Ken Goodwin

The original Mill Creek School was erected in 1879. The fourth building was erected in 1928 containing six classrooms, an auditorium, principal's office, and an outside water fountain. Through years of transition, Mill Creek Academy (MCA) opened two new buildings at the beginning of the 2019 - 2020 school year to support the expansion of the K-8 academy. One building serves as the Academic building while the other building serves as the Athletic and Fine Arts building. MCA Academy continues to forge new traditions, "Leading the CHARGE of lifelong learning!" Mill Creek Academy will always be home of the "Mustangs - Learning for all," where faculty and staff have a relentless commitment in providing an education that meets the needs of each student.

3750 International Golf Pkwy. St. Augustine, FL 32092 (904) 547-3720
www-mca.stjohns.k12.fl.us
 Year Opened: 1991 Mascot: Mustangs

TWELFTH ANNUAL
CHARACTER COUNTS!
 IN ST. JOHNS COUNTY



FEBRUARY 1, 2025
RACESMITH.COM

The CreekLine
 Your Community Newspaper!

Delivered to more than
 30,000 addresses
 in NW St. Johns County.



Call Linda Gay today
 to advertise your business!

904.607.5062

Linda@FloridaNewsLine.com



Palm Valley Academy Grades K-8



Photo credit: Florida NewsLine



Photo credit: St. Johns County School District

Principal
Zach Strom

Palm Valley Academy (PVA), home of the Bobcats, is one of the district's newest K-8 schools. PVA was designed to include high quality learning areas which feature movable walls between classroom teams as well as extended learning areas for collaboration opportunities. The school also includes state-of-the-art technology and excellent core facilities including a media center, gymnasium, cafeteria, playgrounds and physical education fields. The vision of PVA, "Building Purposeful Leaders Who Shine Through Achievement," shows that this is a school dedicated to ensuring that students and staff dream big, set goals, and continually work toward their highest potential. The goal is to make each school year successful for the entire school family. At PVA, "We Pursue Excellence, We Value All, We Achieve Success!"

2135 Palm Valley Road Ponte Vedra, FL 32081 (904) 547-4200
www.pva.stjohns.k12.fl.us
 Year Opened: 2018 Mascot: Bobcats

Patriot Oaks Academy Grades K-8



Photo Credit: Florida NewsLine, Inc.



Photo credit: St. Johns County School District

Principal
Drew Chiodo

At Patriot Oaks Academy (POA), the faculty and staff believe that "all means all." We are a community that fosters character development, independence, and a lifelong love for learning. Our teachers and staff are driven by our mission which states that we are "Committed to every student, every day," enabling children to reach their personal goals and potential. Our community, primarily residing in the Durbin Crossing neighborhoods, plays a major role at our school with volunteering and supporting students helping them be successful in our fast-paced and ever-changing world. Patriot Oaks ensures high achievement for all students but focuses first on children to be "Good Chargers." As a school community, we are committed to building relationships, collaborating together for every child's needs, and to relentlessly pursue our curiosity. We are passionate about the K-8 model and the "family" atmosphere that it fosters. As we celebrate ten years of excellence, we will continue to work hard, learn something every day, and be kind to ourselves and everyone around us!

475 Longleaf Pine Pkwy. St. Johns, FL 32259 (904) 547-4050
www.poa.stjohns.k12.fl.us
 Year Opened: 2014 Mascot: Chargers

There's Strength in Numbers.

Our entire pediatric team works with you for your child's health.

Experience the best in pediatric care at UF Health Family Medicine and Pediatrics – Nocatee. Our board-certified pediatricians provide comprehensive, personalized care from birth to 21 years old.



Victoria Array, MD
Pediatrician



Lucy Miller, MD
Pediatrician



Jessica Warrick-Imrisek, MD
Pediatrician

Care and Treatment

- Annual checkups
- Behavioral health
- Illnesses
- Immunizations
- Minor injuries
- School and sports physicals
- Specialty referrals
- Well-baby visits



203 Fort Wade Road
Suite 200
Ponte Vedra, FL 32081

UFHealthJax.org/nocatee

Now welcoming new patients.

Call 904.383.1053 to schedule an appointment.

UF Health accepts most major commercial insurance plans, including TRICARE.

Pine Island Academy Grades K-8



Photo credit: St. Johns County School District



Photo credit: Leonard's Studios

Principal
Amanda Riedl

Pine Island Academy (PIA) opened in August 2022 as the third K-8 in the Nocatee community. Nestled in the marshes at the end of Pine Island Road, PIA, home of the Dolphins, excelled in building a culture of excellence, embracing the vision and mission that was crafted by our students, staff (staff and faculty), and community. Our vision and mission drive the success of PIA and serve as the compass of why we show up every day ready to accept any challenge with a heart of a champion, giving nothing but our best. Pine Island leads "all in" as champions for learners. Our students thrive in an environment that promotes self-efficacy where students believe in their abilities and work hard to achieve their goals. PIA's priority in cultivating a culture where students see themselves as champions of their own learning and fully capable of succeeding throughout their education and beyond, guides each decision we make at Pine Island - Our kids deserve it! At PIA, we are fully committed to creating an environment where students and staff show up every day, excited, joyful, and motivated to lead with passion, show love and compassion to each other, and are driven to do their very best in opportunities that are presented no matter the challenge! PIA embraces the needs of every student, every need, every day - all in!

805 Pine Island Road St. Augustine, FL 32095 (904) 547-7500
www-pia.stjohns.k12.fl.us
 Year Opened: 2021 Mascot: Dolphins

Valley Ridge Academy Grades K-8



Photo Credit: Florida NewsLine, Inc.



Photo credit: St. Johns County School District

Principal
Angie Fuller

Valley Ridge Academy (VRA) is a K-8 school which currently serves approximately 1,300 students from the Nocatee and surrounding communities in Ponte Vedra. Students attending VRA take an active role in their learning with ongoing differentiated support from highly qualified and caring instructors. The faculty and staff at VRA firmly believe that a collaborative effort between the school, the students and parents, and the community will help to guide each child to reach his or her full academic potential. VRA supports all students by offering after-school clubs, tutoring, and athletics. As a model Positive Behavior Intervention and Support (PBIS) school, VRA is dedicated to creating a safe and nurturing environment built upon the foundation of the 6 Pillars of Character Counts! and the VRA Way!

105 Greenleaf Drive Ponte Vedra, FL 32081 (904) 547-4090
www-vra.stjohns.k12.fl.us
 Year Opened: 2014 Mascot: Hawks

Trout Creek Academy Grades K-7



Rendering courtesy St. Johns County School District




Photo credit: St. Johns County School District

Principal
Katie O'Connell

At Trout Creek Academy (TCA), we believe in nurturing curious minds and empowering students to discover their unique strengths. Our community is built on a foundation of integrity, where collaboration and mutual respect guide us. We support our students in overcoming obstacles, helping them to forge a purposeful path in their educational journey and beyond. Together, we inspire each individual to reach their full potential and create a brighter future. TCA will serve kindergarten through seventh grade for this year and is located on approximately 26.5 acres on Timberwolf Trail within the Shearwater development in northwest St. Johns County. It will accommodate approximately 1,500 students. At TCA, we will empower all students to persevere, discover their strengths, and excel in their educational journey and beyond. TCA is home of the Terrapins!

855 Timberwolf Trail St. Augustine, FL 32092 (904) 547-4450
www-tca.stjohns.k12.fl.us
 Year Opened: 2024 Mascot: Terrapins






**Competitive Cheerleading
Tumbling - Stunting Classes**

**Award Winning Competitive Teams
Performance Teams & Intro to Cheer**

Ages 5-18

904.810.5993
 23 Panther Lane Ste 12, Ponte Vedra, FL 32081
 www.zonecheerallstars.com

 @zonecheerallstars
 @ZoneCheerInc
 @ZoneCheerInc













Horace Mann



Retirement 403b/ 457b/ Roth IRA
 FL Retirement System and Student Loan Forgiveness Workshops
 Life Insurance College 529 Plans
 Auto Motorcycle Renters Boat Golf Cart Home

Heritage Educators Insurance, Co
 Shannon Millican and Associates
 350 Paseo Reyes Dr, St Augustine, FL 32095
 904-810-5636 | shannon.millican@horacemann.com

Fruit Cove Middle School Grades 6-8



Photo Credit: Michael Clark, Webmaster, St. Johns County School District



Photo credit: Cathy Studios

Principal
Kelly Jacobson

Fruit Cove Middle School opened in 2001 originally as Fruit Cove School, a K-8 school serving the growing northwest part of the county. Due to the area's strong military presence, "The Flyers" was chosen as the school mascot. In 2002, Fruit Cove Middle School would later become a traditional middle school. As a Positive Intervention and Support (PBIS) school, the Fruit Cove Middle School staff is dedicated to creating a school atmosphere that fosters positive relationships between staff and students and among the student body as well. Courses offered include art, health, band, chorus/theatre, technology, Spanish, WEB, and yearbook. Along with a challenging academic curriculum, Fruit Cove Middle School offers extracurricular activities including basketball, volleyball, cross country, track/field and clubs: Art, Drama, Chess, Future Educators of America, Marine Science, Minecraft, Tabletop Gaming and Hobby, Fellowship of Christian Athletes, Where Everyone Belongs (WEB), B6/Fruit Cove Cares, and National Junior Honor Society to help develop character and leaderships in various roles on campus.

3180 Race Track Road St. Johns, FL 32259 (904) 547-7880
www.fcs.stjohns.k12.fl.us
 Year Opened: 2001 Mascot: Flyers

Alice B. Landrum Middle School Grades 6-8



Photo Credit: Michael Clark, Webmaster, St. Johns County School District



Photo credit: St. Johns County School District

Principal
Troy Kasting

At Alice B. Landrum Middle School (LMS), our primary goal is to create and sustain an environment that supports the success of every student. We will facilitate this process through the collaborative work of our professional learning communities and by our deliberate practice of organizing students to interact with content. We believe that every teacher is a literacy coach, and that effective implementation and execution of evidence-based high yield instructional strategies will have a profound cumulative impact on student success. LMS is committed and steadfast in its effort to provide meaningful professional development for the instructional and support staff that stoke a passion for lifelong learning and makes clear our vision of success for every student. We will strengthen school culture the Landrum way, deliberately with clear focus on developing respectful, disciplined, diligent, responsible, and empathetic student learners. A LMS teacher is one who uses their content area to help students become self-reliant and self-governing individuals who have authorship over their lives. We encourage and promote student agency; the notion that each student can and will influence their own thinking and actions. LMS will forever honor its rich academic traditions and history of student achievement, as we set a course for the future success of all students.

230 Landrum Lane Ponte Vedra Beach, FL 32082 (904) 547-8410
www-lms.stjohns.k12.fl.us
 Year Opened: 1991 Mascot: Lions

R. J. Murray Middle School Grades 6-8



Photo Credit: St. Johns County School District



Photo credit: Leonard's Studios

Principal
Dr. Esther Seward

R.J. Murray Middle School (RJMS) was established in 1959 and is the Home of the Bulldogs. Extracurricular and school-based activities at Murray include STEM Club, Lego Robotics, eSports, debate club, chess club, step team, dance, drama, chorus, theatre, band, visual and digital arts, cheerleading, football, flag football, basketball, cross-country, soccer, baseball, softball, wrestling, tennis, golf, volleyball, beach volleyball, and pickleball. As the home of the St. Johns County Center for the Arts (SJCCA), we place a strong focus on arts education, performance, and competition. RJMS also offers a strong STEM and Career and Technical Education Program. We offer a wide array of options during the school day as well as after school to support the diverse interests of our students. Our school motto is "One Team, No Limits!" We believe that a strong partnership between the school, the students, and the community will lead to success for all students. Our theme is "B.E.L.I.E.V.E. - Bulldogs empower, love, inspire, elevate, value, and encourage each other." We believe that if all stakeholders work as "One Team," there is "No Limit" to the success our students will achieve.

150 N. Holmes Blvd. St. Augustine, FL 32084 (904) 547-8470
www-mms.stjohns.k12.fl.us
 Year Opened: 1959 Mascot: Bulldogs

First Coast Technical College
Your Future Comes First

GRAB YOUR FUTURE DUAL ENROLL

High school students can experience hands-on learning in FCTC's: industrial, culinary, education, information technology, health and human services programs.

- TUITION-FREE
- RECEIVE CREDITS OR ELECTIVES
- LEARN SKILLS THAT YOU'LL USE IN PROFESSIONAL AND PERSONAL LIFE
- BUILD YOUR SCHEDULE WITH YOUR SCHOOL COUNSELOR

AUTOMOTIVE **HVAC/R**
EARLY CHILDHOOD **CULINARY**
AGRICULTURE **WELDING**
COSMETOLOGY **NAILS**
DENTAL ASSISTING **DIESEL**
CYBERSECURITY
HORTICULTURE

FCTC.EDU

Pacetti Bay Middle School Grades 6-8



Photo credit: Leonard's Studios

Principal
Jeanette Murphy

Photo Credit: Florida NewsLine, Inc.

Pacetti Bay Middle School's (PBMS) mission is to inspire all with a passion for life-long learning, a commitment to personal integrity and academic excellence. PBMS provides a safe place for all to explore personal pathways to become contributing members of a diverse society. PBMS offers myriad electives and core academic offerings with a focus of preparing each student for the rigors of high school and beyond. Students use their problem-solving ability and critical thinking skills to enhance our community through service. Our school practices the Wildcat Way: "Be Responsible, Be on Time and Prepared to Learn, Be an Active Learner, and Be Respectful."

245 Meadowlark Lane St. Augustine, FL 32092 (904) 547-8760
www-mms.stjohns.k12.fl.us
 Year Opened: 2007 Mascot: Wildcats

Gamble Rogers Middle School Grades 6-8



Principal
Brian Wilson

Photo Credit: St. Johns County School District

Gamble Rogers Middle School (GRMS) is the home of the Stingrays. The mission at GRMS is that teachers continually collaborate to create the best learning path for all students. Students understand the value of being engaged in their education as goal-setting, college- and career-bound questioners, who recognize the value of all learning opportunities. The vision statement is, "GRMS will be a progressive school in which students are prepared to achieve at their highest level, preparing them for college and career, surrounded by an engaged community that is proud of its educational accomplishments." GRMS offers a variety of clubs for students such as Drama Club, Robotics Club, Art Club, National Junior Honor Society, Debate Club, Cross Country Club and Chess Club. The StingRAYS Motto is: Resiliency Always Yields Success.

6250 US Highway 1 South St. Augustine, FL 32086 (904) 547-8700
www-grms.stjohns.k12.fl.us
 Year Opened: 1994 Mascot: Stingrays



The Way Youth Sports Should Be

The way Youth Sports Should be

Age-appropriate instruction making sports fun for kids and convenient for today's busy families.

i9 Sports is a multi-sport provider focused solely on high-quality, community-based youth sports programs.

Programs ages 3 and up: Pee Wees • Juniors • Seniors



Sports leagues • camps • clinics

- flag football
- basketball
- soccer
- baseball



www.i9sports.com

Sebastian Middle School Grades 6-8



Photo credit: Leonard's Studios

Principal
Kirstie Gabaldon

Photo Credit: St. Johns County School District

Sebastian Middle School (SMS) opened in 1991, located just north of historic downtown St. Augustine. SMS is home of the Eagles and serves sixth through eighth grade students from the greater St. Augustine area. Unique amongst St. Johns County middle schools, SMS is a Cognia certified S.T.E.M. (Science, Technology, Engineering, Arts and Math) school. SMS has an engineering and arts focus. Courses offered include orchestra, guitar, band, art, theatre, dance, robotics, Green Architecture, Explorations of Engineering and Introduction to Technology. As a S.T.E.A.M. school, instruction in all classes focuses on problem solving and application. Classes in math and science are offered up to a tenth grade level to support our gifted students. After-school clubs include Art, National Jr. Honor Society, Biodiversity, National Jr. Thespian Society, Lego League Robotics, Gaming, and Coding among others.

2955 Lewis Speedway St. Augustine, FL 32084 (904) 547-3840
www-sms.stjohns.k12.fl.us
 Year Opened: 1991 Mascot: Eagles

Switzerland Point Middle School Grades 6-8



Photo credit: St. Johns County School District

Principal
Linda Carnall

Photo Credit: Michael Clark, Webmaster, St. Johns County School District

Switzerland Point Middle School (SPMS), home of the Raiders, was opened in 1991 at the same time as Alice B. Landrum Middle to accommodate the growth of the northern portions of the county. It is named after the geographical location of Switzerland Point along the St. Johns River. The school's mission statement is, "Switzerland Point Middle School strives to empower all students with a passion and a curiosity for learning as well as empathy for others. Each student's strengths, talents, and creative abilities will be recognized and nurtured." Collaboration between parents, teachers, students, and staff fosters a culture of high expectations and strong character. That coupled with Character Counts! initiatives and a variety of extracurricular and elective activities create an environment where students can thrive academically and socially in ways that give life to the school's motto: Be Respectful, Be Responsible, Be Safe.

777 Greenbriar Road St. Johns, FL 32259 (904) 547-8650
www-raider.stjohns.k12.fl.us
 Year Opened: 1991 Mascot: Raiders

NOW ENROLLING
24-25 School Year!



Infants - 5th Grade

Schedule
a Tour
Today!



CollageDaySchool.org

- Low Student to Teacher Ratios
- Whole Child Approach to Learning
- Elevated Education
- Accepting School Choice and Step Up Scholarships

904.900.1439 | 171 Canal Blvd, Ponte Vedra Beach

District Fact

A fleet of 300 school buses transports more than 25,700 students an average of 29,000 miles per day for more than 5.2 million miles per year. Additionally, transportation services are provided for 3,500 annual field study trips.

School cafeterias serve 73,375 breakfast and lunch meals as well as 44,900 a la carte items weekly.

Bartram Trail High School Grades 9-12



Photo Credit: Michael Clark, Webmaster, St. Johns County School District



Photo credit: Cady Studios

Principal
Chris Phelps

Bartram Trail High School (BTHS), home of the Bears, was named after the William Bartram Scenic Highway and Bartram Trail exploration route in northern St. Johns County. BTHS is 190,000 sq. ft. on 120 acres of land. The school building is a two-story octagon with an open-air courtyard in the center. The courtyard features a V-shaped sculpture standing for "Victory" that was unveiled on Sept. 11, 2002 to commemorate 9/11. The sculpture was constructed using one of only 73 pieces of donated material from the World Trade Center debris and is believed to be the only piece in a high school nationwide and the only piece in Florida. The mission statement of BTHS is to serve as a center for academic excellence, community involvement and character development, while fostering a joy for lifelong learning. BTHS offers several academies including the Design Academy featuring architectural design, interior design and fashion design, the VyStar Academy of Business and Finance, the Information Technology Academy, and the Air Force JROTC.

7399 Longleaf Pine Pkwy. St. Johns, FL 32259 (904) 547-8340
www-bths.stjohns.k12.fl.us
Year Opened: 2000 Mascot: Bears

Beachside High School Grades 9-12



Photo Credit: Michael Clark, Webmaster, St. Johns County School District



Principal
Greg Bergamasco

Beachside High School (BHS), home of the Barracudas, is located in northeast St. Johns County and serves the various communities in Beachwalk and surrounding neighborhoods. In addition to providing all levels of comprehensive academic programming, BHS offers the AICE program which is the most rigorous pre-university curriculum. BHS is proud to offer the following academies: Global Logistics and Supply Chain Management, Informational Technology, Veterinary, and Biomedical Sciences. All programs of choice prepare students to leave Beachside High School both college and career ready. Athletics are also a vital part of school culture where we are Pursuing Victory with Honor as a means to capture the Six Pillars of Character. Students are given the opportunity to participate in student-led clubs and organizations.

200 Great Barracuda Way St. Johns, FL 32259 (904) 547-4400
www-bhs.stjohns.k12.fl.us
Year Opened: 2022 Mascot: Barracudas

Transform your smile
and your confidence with a
complimentary consultation!



Unleash your TRDMK Smile, new confidence, and improved oral health with braces or invisalign. Dr. Henry has two decades of hands-on experience transforming smiles and gives personal one-on-one attention to every patient.

491 Prosperity Lake Dr. Suite 301
St. Augustine FL. 32092

904-429-0095
HenryAdvancedOrthodontics.com



Career Academies

28 High School Career Academies - <https://cte.stjohns.k12.fl.us/academies/>

Bartram Trail High School

Design Academy - Science, Technology, Engineering and Math (STEM) program focusing on one of three concentrations: Interior Design, Fashion Design or Architectural Design
 Information Technology Academy - Content includes computer application skills, computer hardware, software applications, web page design, systems support and network concepts
 VyStar Academy of Business - Academic and internship program focused on financial service and entrepreneurship

Beachside High School

Academy of Global Logistics and Supply Chain Management - Offers insight into the roles of logistics and supply chain management in a global economy
 Academy of Information Technology - Focuses on software development including fundamentals of programming
 Academy of Veterinary and Biomedical Sciences - Four-year program designed to prepare students for a career in Veterinary Science; allows students to explore the concepts of human medicine, physiology, genetics, and public health

Creekside High School

Academy of Emerging Technology - STEM programs focused on Cybersecurity, Digital Media, Financial Technology and TV Production
 Academy of Engineering and Environmental Sciences - STEM program focusing on two strands: Engineering and Environmental Science
 St. Johns County Academy of Future Teachers - Explores careers in education and allows students to begin student teaching in high school

Pedro Menendez High School

UF Health Academy of Future Healthcare Professionals - Features hands-on learning to prepare students for fields in the medical industry
 Academy of Architectural and Building Sciences - Offers certifications in the latest drafting software and/or carpentry, plumbing, and electrical to prepare students for a future in architecture/building trades.
 VyStar Academy of Business - Academic and internship program focused with opportunity to work in the credit union, school store, or yearbook team.

Allen D. Nease High School

Stellar Academy of Engineering - STEM program that offers a broad base of knowledge, skills and experience in drafting and design technology
 Communications Academy - Offers one of two career-themed paths: TV Production or Digital Design
 Academy of Hospitality and Tourism - Partnered with the North Florida Hotel and Lodging Association to give students professional skills and real-world experience in the hospitality and tourism industry.

Ponte Vedra High School

Academy of Biotechnology and Medical Research - STEM program focusing on the use of living organisms to make useful products from biological systems

Academy of International Business and Marketing - Offers two strands: International Business which focuses on the financial and legal aspects of business in the global arena or marketing which focuses on the development and marketing of consumer goods and services
 Academy of Information Technology - Content includes computer application skills, computer hardware, software applications, web page design, systems support and network concepts
 St. Johns County Academy of Future Teachers - Explores careers in education and allows students to begin student teaching in high school

St. Augustine High School

Aviation and Aerospace Academy - Partnership with Embry-Riddle Aeronautical University offering an introduction to STEM careers in Aviation and Aerospace Engineering
 St. Johns County Academy of Future Teachers - Explores careers in education and allows students to begin student teaching in high school
 Academy of Law and Homeland Security - Focuses on careers to serve and protect the public in law, law enforcement and Homeland Security related fields

St. Johns Technical High School

Academy of Aquaculture - STEM program studying freshwater and salt-water aquatic species, including governing rules associated with aquatic farming, marine biology, and environmental science.
 Academy of Culinary Arts - Academic and technical training for careers in the high-demand field of food service, preparation and hospitality

Tocoi Creek High School

Academy of Innovation in the Built Environment - Foundation in construction management with project-based coursework
 Academy of Leadership in Emerging Technologies - Emphasizes leadership, entrepreneurial and technical skills in rapidly changing these industries
 UF Health Academy of Future Healthcare Professionals - Features internships and dual enrollment
 St. Johns County Academy of Future Teachers - Explores careers in education and allows students to begin student teaching in high school

Acceleration Academies

- AICE - Cambridge Advanced International Certificate of Education (Beachside and St. Augustine high schools)
- Advanced Placement Courses (All schools)
- Dual High School/College Enrollment
- Early College Program (formerly Collegiate High School) (Pedro Menendez and Tocoi Creek high school)
- Early Career Program (St. Augustine High School)
- IB - International Baccalaureate Program (Nease and Pedro Menendez high school)

ROTC Programs

- Air Force JROTC - Bartram Trail High School
 - Army JROTC - St. Augustine High School
 - Navy JROTC - Allen D. Nease High School
- St. Johns County Center for the Performing Arts (SJCCA)
- Augustine High School
 - Murray Middle School

Creekside High School Grades 9-12



Photo Credit: Florida NewsLine, Inc.



Photo credit: Leonard's Studios

Principal
Steve McCormick

Creekside High School (CHS), home of the Knights, was named after the various creeks that grace the landscape of NW St. Johns County. The school features three academies, the Academy of Emerging Technology, the Academy of Engineering and Environmental Sciences, and the Academy of Future Teachers. The Knights Code of Honor is: "Respect others and yourself at all times; Show good character every day; set goals, stay focused; think and act like a leader; and strive for excellence."

100 Knights Lane St. Johns, FL 32259 (904) 547-7300
www.cshs.stjohns.k12.fl.us
 Year Opened: 2008 Mascot: Knights

Allen D. Nease High School Grades 9-12



Photo Credit: Florida NewsLine, Inc.



Photo credit: Candy Studios

Principal
Gina Fonesca

Allen D. Nease High School (NHS), home of the Panthers, is named after Allen Nease, a pioneer in Florida's reforestation efforts and donor of the land on which the school was built. The school first opened as a junior/senior high school, but as the growth in NW St. Johns County rose, the school eliminated its junior high sector. The mission of NHS is "To inspire all students to be globally-minded and socially responsible life-long learners by providing a rigorous and differentiated curriculum in a safe and nurturing environment." The school has several programs of choice including International Baccalaureate, the Communications Academy, The Stellar Academy of Engineering, the St. Johns County Academy of Hospitality and Tourism and the Naval JROTC. Student life at NHS is diverse, with more than 80 student clubs and organizations from which to choose.

10550 Ray Road Ponte Vedra, FL 32081 (904) 547-8300
www.nhs.stjohns.k12.fl.us
 Year Opened: 1980 Mascot: Panthers



ST. JOHNS COUNTY SCHOOL DISTRICT

2024 TEST SCORES

Information below contains results from the Florida Assessment of Student Thinking (FAST), B.E.S.T. Science, End-of-Course (EOC) Exams and STAR statewide assessments (excludes virtual schools, lab schools, FSDB, and college authorized charter schools).

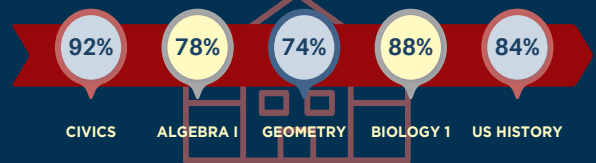


2024 STATEWIDE ASSESSMENT ACHIEVEMENT HIGHLIGHTS

- **1st** in the state in English Language Arts (ELA) Achievement - Grades 3 - 10
- **1st** in the state in Math Achievement - Grades 3, 4, 8, Algebra I End-of-Course (EOC)
- **1st** in the state in Science Achievement - Grade 5, Biology EOC
- **1st** in the state in Civics EOC
- **1st** in the state of US History EOC (Tie)

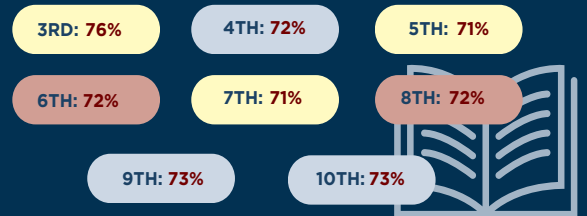
END-OF-COURSE (EOC) ACHIEVEMENT GRADES 7 - 12

Percentage of students who scored 3 and above.



ENGLISH LANGUAGE ARTS (ELA) ACHIEVEMENT GRADES 3 - 10

Percentage of students who scored 3 and above.



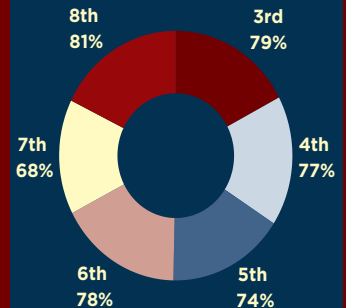
SCIENCE ACHIEVEMENT GRADES 5 & 8



5TH - 69%
8TH - 72%

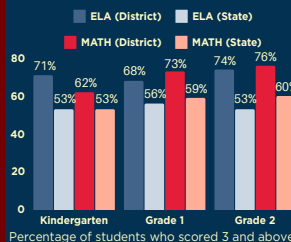
Percentage of students who scored 3 and above.

MATH ACHIEVEMENT GRADES 3 - 8



Percentage of students who scored 3 and above.

ELA & MATH ACHIEVEMENT GRADES K - 2



Percentage of students who scored 3 and above.

Pedro Menendez High School Grades 9-12



Photo Credit: St. Johns County School District



Principal
Ted Banton

Photo credit: Leonard's Studios

Pedro Menendez High School (PMHS) is located in southern St. Johns County. "Not for school, but for life, we learn." is the mission of PMHS and our focus each day. Our vision is to prepare our students to be career and college ready as well as reach their maximum potential in high school and beyond. PMHS focuses on reaching our mission and vision through a focus on the academic standards, analyzing student performance and results to guide the professional learning community (PLC) process to inform instructional practices, and providing intervention for students in all areas of need. PMHS focuses on student growth and development by providing opportunities for student leadership and continuing our school's unique emphasis on accessibility and inclusivity by encouraging and welcoming students of various levels and abilities to participate in all facets of the school. The PMHS experience has a multitude of offerings including: International Baccalaureate (IB), Vystar Academy of Business, UF Health Academy of Future Healthcare Professionals, Architectural and Building Sciences, and the Early College Program (in partnership with St. Johns River State College).

600 State Road 206 West St. Augustine, FL 32086 (904) 547-8660
www-pmhs.stjohns.k12.fl.us
 Year Opened: 2000 Mascot: Falcons

Ponte Vedra High School Grades 9-12



Photo Credit: Florida NewsLine, Inc.



Principal
Dr. Fredrik Oberkehr

Photo credit: Cady Studios

Ponte Vedra High School (PVHS), home of the Sharks, has a campus that sits on a 78-acre site within the Nocatee community west of the Intracoastal Waterway. The school is home to the AP Capstone Diploma Program, Academy of Biotechnology and Medical Research, the Academy of Informational Technology, the Academy of International Business and Marketing, as well as the Academy of Future Educators. It is comprised of three connected two-story building clusters with an open courtyard in the center. The mission of PVHS is to "Empower Every Learner to Develop Good Character and to Achieve Success." Every decision, be it for curricular improvements or student enhancement, is crafted intentionally to equip students for their next step. Whether the step is starting post-secondary study, entering the workforce or serving in the Armed Forces, students have utilized the lessons learned at PVHS to be productive contributors to our local community and community at large.

460 Davis Park Road Ponte Vedra, FL 32081 (904) 547-7350
www-pvhs.stjohns.k12.fl.us
 Year Opened: 2008 Mascot: Sharks

**St. Johns
County School
District**

**First Day of
School**

**Monday,
Aug. 12**



CREEKS FLAG FOOTBALL
 2024-25 Season

REGISTER NOW 

[HTTPS://WWW.CAAFLAGFOOTBALL.ORG](https://www.caaflagfootball.org)

7v7 LEAGUE SOFT SHELL HELMETS 12U, 14U, 15-17U	FLAG FOOTBALL LEAGUE AGES 5U-14U	CAA GIRLS FLAG FOOTBALL 8-12 YRS OLD
---	--	--

First Tee uses **golf** to build **experiences** that **shape futures.**

www.firstteenorthflorida.org

Register for **weekly classes, after-school classes, and holiday camps** throughout St. Johns County.



St. Augustine High School Grades 9-12



Photo Credit: St. Johns County School District



Photo credit: Leonard's Studios

Principal
Travis Brown

St. Augustine High School (SAHS), home of the Yellow Jackets, is located in St. Augustine. SAHS was established as the first high school in the county in 1955. The mission at SAHS is, "Teachers, students, and stakeholders collaborate to build a strong school community through team building, literacy instruction, and learning for college and career readiness for all students." The vision statement of SAHS is "St. Augustine High School is a school of positive and passionate culture builders who develop trust and respect while building a community that values all students. Teachers work with students to grow readers and leaders in all subject areas." SAHS offers several challenging academic programs with more than 200 courses from which to choose. In addition, they offer six academies and programs of choice including: Cambridge Advanced International Certificate of Education Curriculum Program (AICE), SJC Academy of Future Teachers, SJC Center for the Arts, SJC Aerospace Academy, Academy of Law and Homeland Security, and Army JROTC. The Yellow Jacket Nation is proud to be a cornerstone in the St. Augustine community where "Once a Jacket, Always a Jacket" echoes through generations!

3205 Varella Ave. St. Augustine, FL 32084 (904) 547-8530
www-sahs.stjohns.k12.fl.us
 Year Opened: 1955 Mascot: Yellow Jackets

Tocoi Creek High School Grades 9-12



Photo credit: St. Johns County School District



Photo credit: St. Johns County School District

Principal
Jay Willets

Tocoi Creek High School (TCHS), home of the Toros, is centrally located in St. Johns County and serves the various communities in and around the World Golf Village and SilverLeaf areas. Bordering the St. Johns River, the historical settlement of Tocoi served as a mission, school, and important waypoint for residents and travelers from various cultures moving and living throughout the area. The original Timucua village of Tocoi proved to be a strategic crossroad for cultural exchange, education, and economic development for a growing region and our Nation's Oldest City, St. Augustine. In addition to providing all levels of comprehensive academic programming, TCHS is proud to offer an Academy of Innovation in the Built Environment, Academy of Leadership in Emerging Technologies, Academy of Future Educators, Early College Program, and the UF Health Academy of Future Healthcare Professionals. All programs of choice will prepare students to leave TCHS both college and career ready.

11200 St. Johns Pkwy. St. Augustine, FL 32092 (904) 547-4260
www-tchs.stjohns.k12.fl.us
 Year Opened: 2021 Mascot: Toros

Dermatology SouthEast

Accepting New Patients

Swetha Pathak, MD
Joseph Caravaglio, MD

*To Make an Appointment
Please Call*

(904) 512-1899

www.DermSouthEast.com



**We are here
to help!**



**FIND OUT
MORE
ON-LINE!**

- ✓ Substance Use & Mental Health Counseling
- ✓ Parenting Resources
- ✓ Prevention Programs
- ✓ Rapid Response - Call 988
- ✓ Walk-in Access Center
- ✓ Multiple Locations in St. Johns County

(904) 829-2273 **www.EPICBH.org** **info@EPICBH.org**

Accommodations are available for disabled or deaf/hearing-impaired. For assistance, use x 4004
 Accept most commercial insurances, Medicaid, private pay and income based fees.



Sponsored by EPIC Behavioral Healthcare, LSF Health Systems, and the State of Florida, Department of Children and Families.

St. Johns Technical High School Grades 9-12



Photo credit: Leonard's Studios



Photo credit: Leonard's Studios

Principal
Dr. Nigel Pillay

St. Johns Technical High School (SJTHS), home to the Wolves, is located in St. Augustine. The vision of SJTHS is "We strive to create unique opportunities to guide our students toward personal success." The mission of SJTHS is, "to provide an individualized learning path in a student-centered environment through academic and vocational opportunities. Together, we build relationships, value diversity, and develop social and life skills." The students and staff of SJTHS all follow the PACK mentality. As PACK Leaders we are Prepared, Always Responsible, Collaborative, Kind and Safe. Whether a student's next step is starting post-secondary study, entering the workforce, or serving in the Armed Forces, our students have utilized the lessons learned at SJTHS to be productive contributors to our local community and beyond. The school is home to the Academy of Aquaculture and Academy of Culinary Arts.

2970 Collins Ave. St. Augustine, FL 32084 (904) 547-8500
www-sjths.stjohns.k12.fl.us
 Year Opened: 2008 Mascot: Wolves

St. Johns Virtual School Grades K-12



Photo credit: St. Johns County School District



Photo credit: Leonard's Studios

Principal
Ryan Erskine

St. Johns Virtual School, the home of the Rams, is in St. Augustine. St. Johns Virtual School is a program of choice offered by the St. Johns County School District for grades K - 12 and looks to "Create a New Tradition in Education." The vision of St. Johns Virtual School is to be leaders in innovative teaching through online and blended learning programs that use best practices to promote academic excellence in a student-centered environment. The mission of St. Johns Virtual School is to ensure all students are provided with an academically rich and rigorous education through online learning opportunities that meet the needs of today's diverse learners.

2980 Collins Ave. St. Augustine, FL 32084 (904) 547-8081
www.stjohnsvirtual.com
 Year Opened: 2008 Mascot: Rams

**Celebrating
24 years!**

Your community newspapers
 Delivered to more than 79,000 homes



The CreekLine
 (NW St. Johns County)
Ponte Vedra NewsLine
Mandarin NewsLine

**Advertising
Opportunities
Available!**

Call Linda at **904.607.5062** • Linda@FloridaNewsLine.com

First Coast Technical College



Photo credit: St. Johns County School District



Photo courtesy: St. Johns County School District

Director
George Mastoridis

Your Future Comes First at First Coast Technical College. FCTC is this region's premier career and technical education provider located in St. Johns County. Our students range from high school dual and secondary enrolled, seeking electives or exploring careers, graduating high school seniors who are workforce ready in a year to adults who want to retool and upskill. We pride ourselves in our industry expert instructors who provide quality, academic and technical education skills. With help from our local business partners, the chamber of commerce, and community and trade organizations, our students earn industry certifications and licensures to succeed in today's economy. With more than 19 hands-on, in-demand programs, students can select their career pathway among FCTC's wide range of programs that include Agricultural, Food and Natural Resources, Architecture and Construction, Applied Cyber Security, Early Childhood Education, Health Sciences, Hospitality and Tourism, Human Services, Law, Public Safety and Security, Manufacturing, Transportation, Distribution and Logistics, as well as courses in Adult Education and English for Speakers of other languages.

2980 Collins Ave. St. Augustine, FL 32084 (904) 547-3282

www.fctc.edu

Principal: Chris Force Year Opened: 1965

District Fact

Facilities (Updated 2/21/24)

Total Acres: 2,022

Total Number of Permanent Buildings: 286

Total Schools: 51

Total Administrative Offices: 7

Total Building Net Square Feet (NSF): 6,870,675

Total Number of Relocatables: 598

Total Relocatable NSF: 490,180

Total NSF (including relocatables): 7,360,855

TWELFTH ANNUAL
CHARACTER COUNTS!
IN ST. JOHNS COUNTY



SIX PILLARS **6K** **RUN WALK**

FEBRUARY 1, 2025

RACESMITH.COM



2024 Primary Election

Election Day August 20, 2024
Early Voting August 10 - 17, 2024

Deadline to Register to Vote or
Change Party Affiliation

July 22, 2024

2024 General Election

Election Day November 5, 2024
Early Voting October 21 - November 2, 2024

Deadline to Register to Vote

October 7, 2024

Visit www.votesjc.gov

Register to vote, update your information,
request a vote-by-mail ballot, and more!

Questions? Call the Elections Office at 904-823-2238

St. Johns County High Schools Varsity Football Schedules 2024

Bartram Trail High School

8/23 7 p.m. vs. Sumner
 8/30 7 p.m. vs. Ponte Vedra
 9/6 7:30 p.m. at Ware County
 9/13 7 p.m. at Creekside
 9/20 7 p.m. at Orange Park
 9/27 7 p.m. at Toco Creek*
 10/11 7 p.m. at Nease*
 10/18 7 p.m. vs. St. Augustine
 10/25 7 p.m. vs. Buchholz*
 11/1 7 p.m. vs. Ribault

Beachside High School

8/23 7 p.m. vs. Orlando Christian Prep
 8/30 7 p.m. at Englewood*
 9/6 7 p.m. vs. Menendez
 9/13 7 p.m. at Ponte Vedra*
 9/20 7 p.m. at Bishop Kenny*
 10/4 7 p.m. at Toco Creek*
 10/10 7 p.m. at Fleming Island
 10/18 7 p.m. vs. Middleburg*
 10/24 7 p.m. vs. Orange Park*
 11/1 7 p.m. vs. Nease

Creekside High School

8/23 6:30 p.m. at Mandarin
 8/30 7 p.m. vs. Nease
 9/6 7 p.m. at Spruce Creek
 9/13 7 p.m. vs. Bartram Trail
 9/20 7 p.m. vs. Winter Park
 9/27 7 p.m. vs. Sandalwood*
 10/4 7 p.m. at Fleming Island
 10/11 7 p.m. at Atlantic Coast*
 10/18 7 p.m. vs. Raines
 11/1 7 p.m. at Ponte Vedra

Nease High School

8/23 7 p.m. vs. Ponte Vedra
 8/30 7 p.m. at Creekside
 9/6 7 p.m. vs. Ridge Community
 9/13 7 p.m. vs. Fletcher
 9/20 7 p.m. at St. Augustine
 9/27 7 p.m. vs. Buchholz
 10/11 7 p.m. vs. Bartram Trail
 10/18 6:30 p.m. vs. Atlantic Coast
 10/25 7 p.m. at Toco Creek*
 11/1 7 p.m. at Beachside

Pedro Menendez

8/23 7 p.m. vs. Sandalwood
 8/30 7 p.m. vs. St. Augustine
 9/6 7 p.m. at Beachside
 9/13 7 p.m. vs. Parker*
 9/20 7 p.m. at Ponte Vedra
 9/27 6 p.m. at Westside*
 10/11 7 p.m. at Bishop Kenny*
 10/18 7 p.m. vs. Toco Creek
 10/25 7 p.m. at Matanzas
 11/1 7 p.m. vs. Yulee

Ponte Vedra

8/23 7 p.m. at Nease
 8/30 7 p.m. at Bartram Trail
 9/6 7 p.m. vs. Baker County
 9/13 7 p.m. vs. Beachside*
 9/20 7 p.m. vs. Menendez
 9/27 7 p.m. at Fleming Island*
 10/11 7 p.m. vs. Middleburg*
 10/18 7 p.m. at Orange Park*
 10/24 6 p.m. at IMG Academy White
 11/1 7 p.m. vs. Creekside

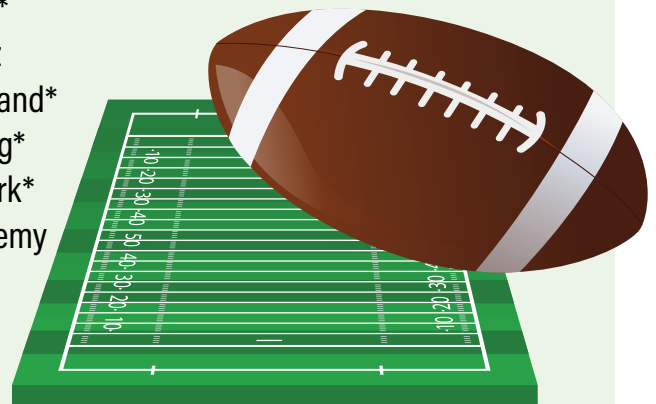
St. Augustine

8/23 7 p.m. at Palatka
 8/30 7 p.m. at Menendez
 9/6 7 p.m. vs. Bolles
 9/13 7 p.m. vs. Riverside
 9/20 7 p.m. vs. Nease
 9/27 7 p.m. at Columbia*
 10/11 7 p.m. vs. Clay*
 10/18 7 p.m. at Bartram Trail
 10/25 7 p.m. vs. Ridgeview*
 11/1 6:30 p.m. at Mandarin

Toco Creek

8/23 6:30 p.m. at First Coast
 8/30 7 p.m. vs. Westside
 9/6 7 p.m. vs. Bishop Kenny
 9/13 7 p.m. at Clay
 9/27 7 p.m. vs. Bartram Trail*
 10/4 7 p.m. vs. Beachside*
 10/11 7 p.m. at Buchholz*
 10/18 7 p.m. at Menendez
 10/25 7 p.m. vs. Nease*
 11/1 7 p.m. at Oakleaf

* District Game



2024-2025 School Calendar

July 2024

M	T	W	T	F
1	2	3	4	5
8	9	10	11	12
15	16	17	18	19
22	23	24	25	26
29	30	31		

August 2024

M	T	W	T	F
			1	2
5	6	7	8	9
12	13	14	15	16
19	20	21	22	23
26	27	28	29	30

September 2024

M	T	W	T	F
2	3	4	5	6
9	10	11	12	13
16	17	18	19	20
23	24	25	26	27
30				

October 2024

M	T	W	T	F
	1	2	3	4
7	8	9	10	11
14	15	16	17	18
21	22	23	24	25
28	29	30	31	

November 2024

M	T	W	T	F
				1
4	5	6	7	8
11	12	13	14	15
18	19	20	21	22
25	26	27	28	29

December 2024

M	T	W	T	F
2	3	4	5	6
9	10	11	12	13
16	17	18	19	20
23	24	25	26	27
30	31			

1st Quarter = 43 days

2nd Quarter = 43 days

January 2025

M	T	W	T	F
		1	2	3
6	7	8	9	10
13	14	15	16	17
20	21	22	23	24
27	28	29	30	31

February 2025

M	T	W	T	F
3	4	5	6	7
10	11	12	13	14
17	18	19	20	21
24	25	26	27	28

March 2025

M	T	W	T	F
3	4	5	6	7
10	11	12	13	14
17	18	19	20	21
24	25	26	27	28
31				

3rd Quarter = 46 days

April 2025

M	T	W	T	F
	1	2	3	4
7	8	9	10	11
14	15	16	17	18
21	22	23	24	25
28	29	30		

May 2025

M	T	W	T	F
			1	2
5	6	7	8	9
12	13	14	15	16
19	20	21	22	23
26	27	28	29	30

June 2025

M	T	W	T	F
2	3	4	5	6
9	10	11	12	13
16	17	18	19	20
23	24	25	26	27
30				

4th Quarter = 48 days

Total 180 Days

- Teacher Optional Planning
- 8 Teacher Planning (non-student day)
- 2 Teacher Inservice (non-student day)
- Classes Resume
- Student/Teacher Holiday
- End of Quarter
- No School

Easter is on April 20, 2025

- Teacher Optional Planning



Dr. Craig Hadgis
Board Certified Orthodontist

Voted
Best Orthodontist
St Augustine
and
St Johns



Smiles by
DR CRAIG HADGIS
ORTHODONTIST

Free Initial Visit 904.79.SMILE (797.6453)
www.DrCraigOrtho.com

TWO
STATE-OF-THE-ART
LOCATIONS

ST JOHNS
111 Doctors Village Dr
Race Track Rd

ST AUGUSTINE
22 St Johns Medical Park
US-1





Stay Safe

We can all play a part in keeping kids safe with the tips below and more!

- 1:** Never leave a child or pet unattended in a vehicle for any length of time.
- 2:** Know where the nearest Automated External Defibrillator (AED) is located and how to use it.
- 3:** Install a Carbon Monoxide (CO) detector near each bedroom in your home.
- 4:** Install smoke alarms and test them at least once a month.
- 5:** Never run a car in the garage for an extended period of time, even if the garage door is open.
- 6:** LOL, OMG, RIP - Don't text and drive.



Donate and Learn More by Visiting:
[FirehouseSubsFoundation.org](https://www.FirehouseSubsFoundation.org)

TM & © 2024 FRG, LLC.

St. Johns County School Locations



- | | |
|---|--|
| 1 - Alice B. Landrum Middle School | 26 - Pacetti Bay Middle School |
| 2 - Allen D. Nease High School | 27 - Palencia Elementary School |
| 3 - Bartram Trail High School | 28 - Palm Valley Academy |
| 4 - Beachside High School | 29 - Patriot Oaks Academy |
| 5 - Bethune-Cookman College (Spuds Campus) | 30 - Pedro Menendez High School |
| 6 - Creekside High School | 31 - Picolata Crossing Elementary School |
| 7 - Cunningham Creek Elementary School | 32 - Pine Island Academy |
| 8 - Durbin Creek Elementary School | 33 - Ponte Vedra High School |
| 9 - First Coast Technical College | 34 - PV-PV \ Rawlings Elementary School |
| St. Johns Technical High School | 35 - R.B. Hunt Elementary School |
| 10 - Flagler College | 36 - R.J. Murray Middle School |
| 11 - Florida School for the Deaf and Blind | 37 - St. Augustine High School |
| 12 - Freedom Crossing Academy | 38 - St. Johns Regional Juvenile Detention Center and St. Johns Residential Facility |
| 13 - Fruit Cove Middle School | 39 - St. Johns River State College |
| 14 - Gaines Alternative Center at the Evelyn Hamblen Center | 40 - Sebastian Middle School |
| 15 - Gamble Rogers Middle School | 41 - South Woods Elementary School |
| 16 - Hastings Youth Academy | 42 - Switzerland Point Middle School |
| 17 - Hickory Creek Elementary School | 43 - Timberlin Creek Elementary School |
| 18 - John A. Crookshank Elementary School | 44 - Toco Creek High School |
| 19 - Julington Creek Elementary School | 45 - W.D. Hartley Elementary School |
| 20 - Ketterlinus Elementary School | 46 - Wards Creek Elementary School |
| 21 - Liberty Pines Academy | 47 - The Webster School |
| 22 - Mill Creek Academy | 48 - University of St. Augustine |
| 23 - Ocean Palms Elementary School | 49 - Valley Ridge Academy |
| 24 - Osceola Elementary School | 50 - Trout Creek Academy |
| 25 - Otis A. Mason Elementary School | 51 - Lakeside Academy |



Avecina

MEDICAL

If It's Urgent. It's Avecina!

Services



Sports Physicals



School Physicals



Cold and Flu



Shot Records Transfer



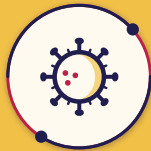
After Hours Care



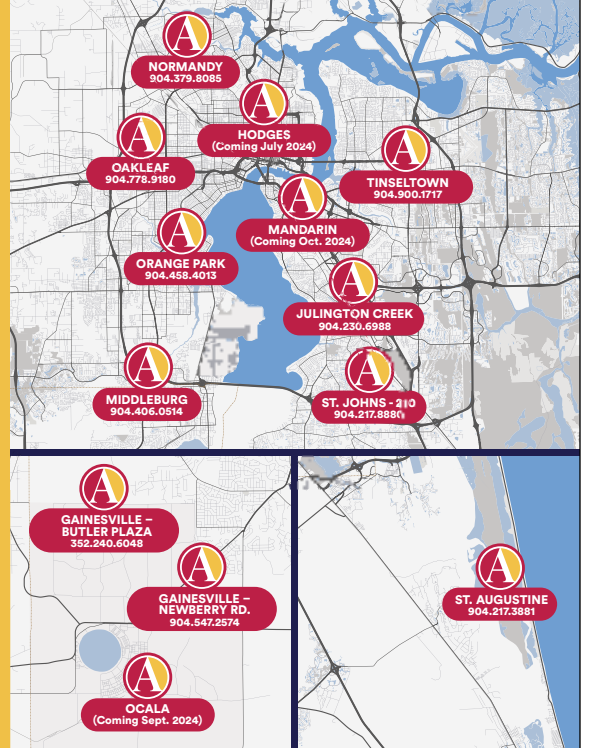
Imaging



Stitches



Covid Testing



Our Jacksonville Locations

Tinseltown
904.367.2143

Julington Creek
904.342.4028

Middleburg
904.406.0654

Normandy
904.619.8042

Oakleaf Town Center
904.778.9740

Orange Park
904.579.4289

St. Johns - 210
904.342.2502

Mandarin
(Coming Oct. '24)

Hodges
(Coming July '24)

Find Out More About Our Services at Avecina.com

Your child was born with curiosity.
Now is the best time to nurture it.



The Beginning of **Something Big**[™]

In the first five years, everything is big and exciting, and your child is learning by leaps and bounds. At Primrose schools in Georgia, we tap into the ways children learn best to help inspire a love of learning that will serve them for the rest of their lives.

Now Enrolling Ages 0-5

Primrose School on Crosswater Parkway
PrimroseCrosswater.com | (904) 547-1213

Primrose School of Glen Kernan - Jacksonville
PrimroseGlenKernan.com | (904) 992-9002

Primrose School at St. Johns Forest
PrimrocestJohnsForest.com | (904) 824-1100

Primrose School of Julington Creek
PrimroseJulingtonCreek.com | (904) 230-2828



Each Primrose school is a privately owned and operated franchise. Primrose Schools is a registered trademark of Primrose School Franchising SPE, LLC. ©2024 Primrose School Franchising SPE, LLC. All rights reserved.